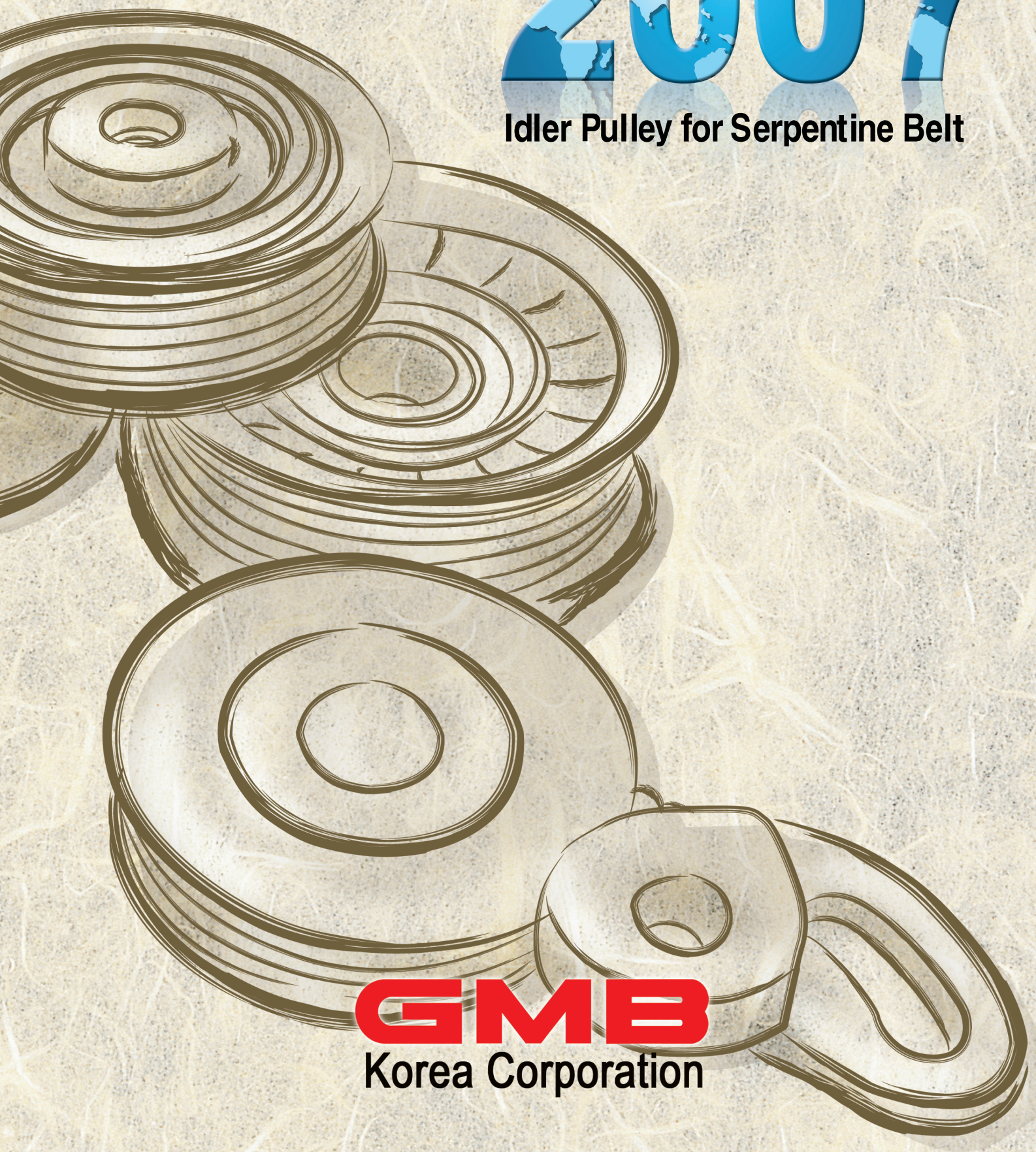




2007

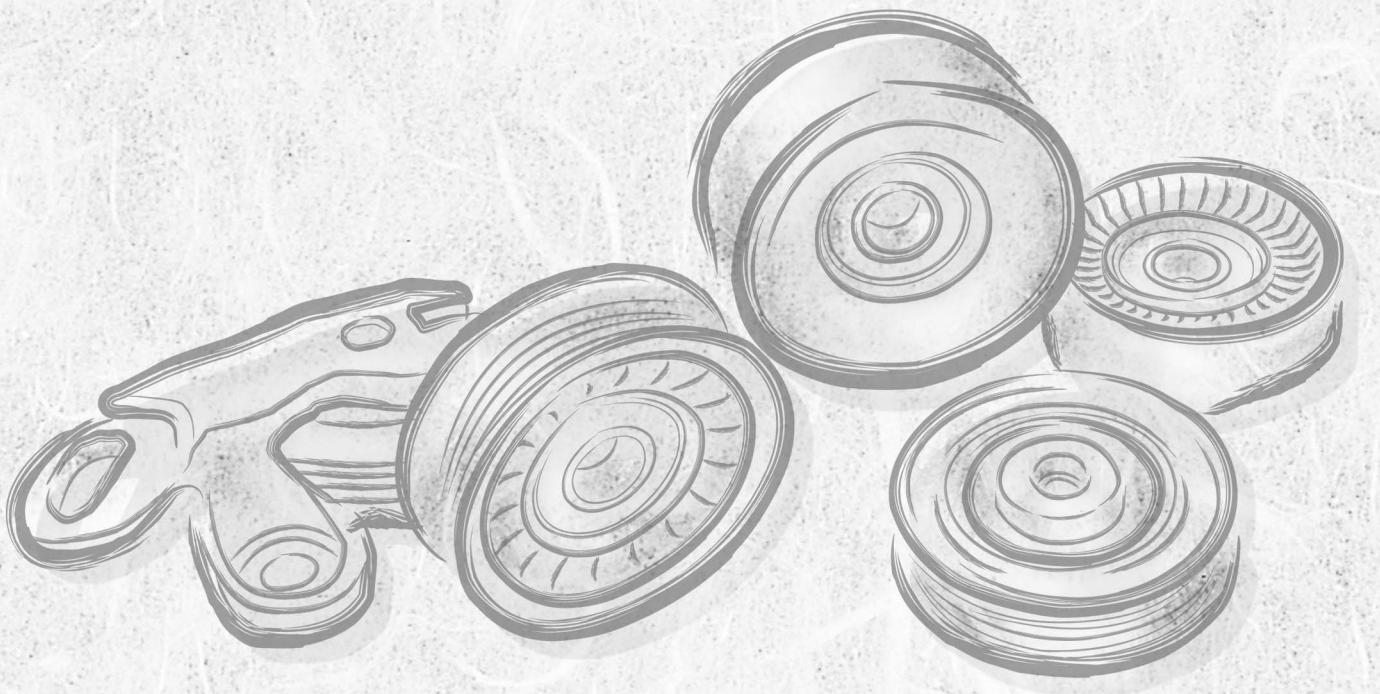
Idler Pulley for Serpentine Belt



**GMB**  
Korea Corporation



# Contents



<b>PART 1</b>	<b>GMB Serpentine Idler Pulley Structure .....</b>	<b>6</b>
	<b>GMB Serpentine Idler Pulley Guide .....</b>	<b>7</b>
<b>PART 2</b>	<b>GMB Serpentine Idler Pulley Guide For Basic Dimension &amp; Part NO. ....</b>	<b>10</b>
<b>PART 3</b>	<b>GMB Serpentine Idler Pulley Application Guide .....</b>	<b>14</b>





# GMB Group

## Global Business & Management

China GMB(Shandong)



**GMB Korea Corp.**



GMB North America inc.



China GMB(Qingdao)



Japan GMB(H.Q.)



Thai GMB



< Legend >

- Manufacturing 6
- Sales Office 1
- Sales Rep. 2

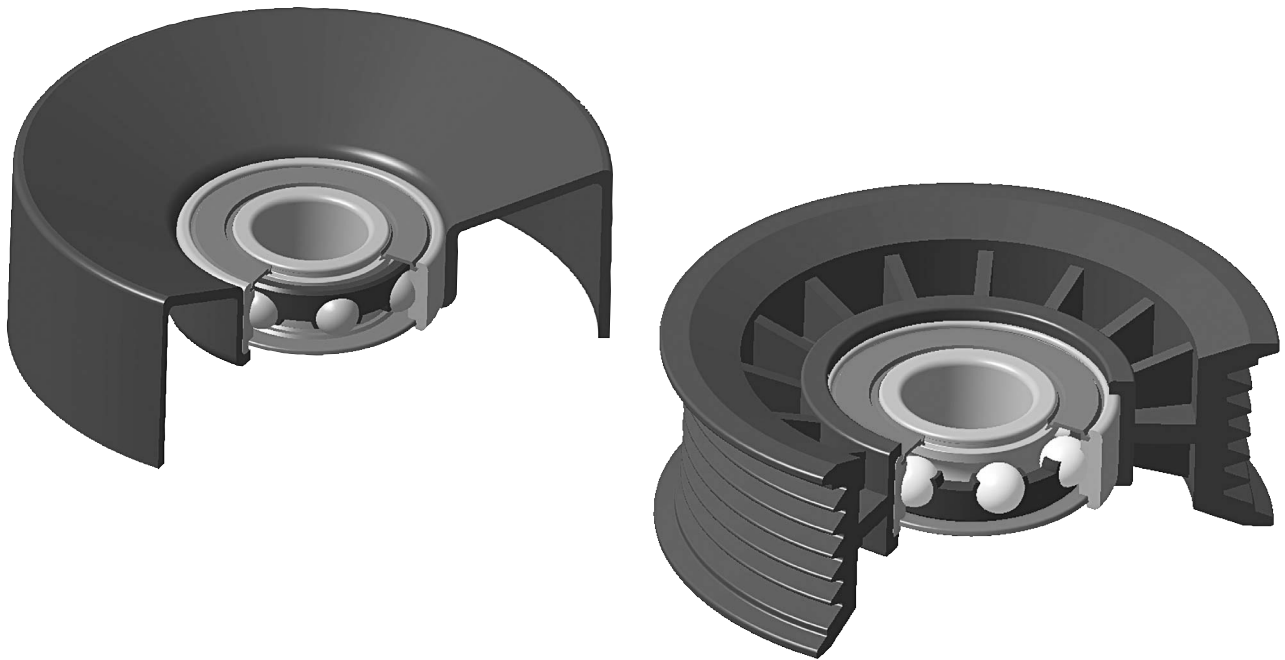
# PART 1

- GMB Serpentine Idler Pulley Structure
- GMB Serpentine Idler Pulley Guide



**GMB**



**• GMB Serpentine Idler Pulley Structure****■ GMB Bearing Concept**

- Optimum clearance
- The use of grease for long life
- The best sealing to prevent grease leak and inflow of impurities
- Optimized control for bearing condition to reduce pulley tilt

**■ Seal**

- Seal design for low rotation torque to prevent excessive seal abrasion and friction heat

**■ Grease**

- The use of grease for high load & RPM

**■ Steel Pulley**

- Crown on belt running surface
- Stress analysis of designed pulley
- Surface treatment (Under heavy metal regulation & Corrosion resistance)

**■ Plastic Pulley**

- ⇒ Glass fiber reinforced engineering plastic



## • GMB Serpentine Idler Pulley Guide

### ◆ STEP FOR SLECTING PROPER GMB SERPENTINE PULLEY REPLACEMENT

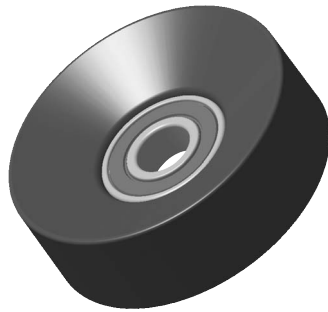
#### 1. Pulley determine for Material

- Steel
- Polymer (Plastic)

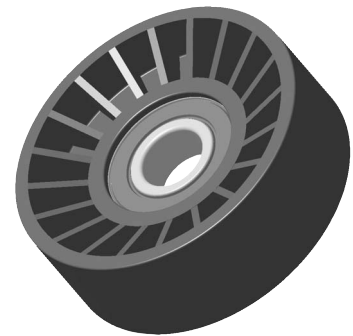
#### 2. Slecting Pulley Shape.

- Backside of Pulley (Flat)

Steel



Plastic



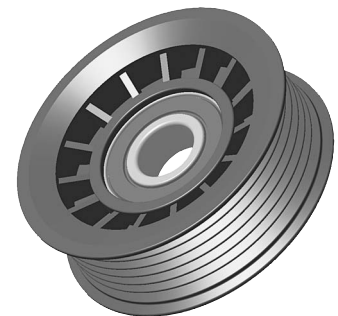
Flat Type(Steel & Plastic) 88XXX ~ Series

- Grooved Pulley

Steel



Plastic



Grooved Type (Steel & Plastic) 89XXX ~ Series

- V Grooved Pulley



V Grooved Type 98XXX ~ Series







# PART 2

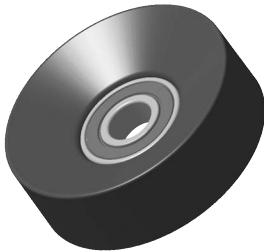
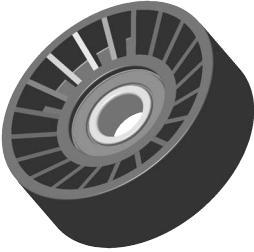

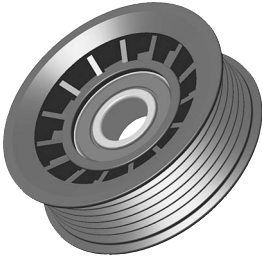
- GMB Serpentine Idler Pulley Guide  
For Basic Dimension & Part NO.



**GMB**



# GMB Serpentine Idler Pulley Guide For Basic Dimension & Part NO.

Pic.	GMB Part #	Outer Dia.	BELT	Width Dim.	Br'g Base	Material
	GSP88 001	90	4PK	20.1	6301	Steel
	GSP88 002	90	5PK	22	6006	Steel
	GSP88 003	82	5PK	22		Steel
	GSP88 004	90	6PK	25	6006	Steel
	GSP88 005	70	6PK	25.5	5203	Steel
	GSP88 006	82	6PK	26	NA	Steel
	GSP88 007	100	6PK	28	6203	Steel
	GSP88 008	90	6PK	29.5	6203	Steel
	GSP88 009	90	6PK	31	6006	Steel
	GSP88 010	76	6PK	31	6203	Steel
	GSP88 011	90	7PK	32	6006	Steel
	GSP88 012	76	7PK	33	6303	Steel
	GSP88 013	90	8PK	37	6203	Steel
	GSP88 021	78	4PK	20	6301	Steel
	GSP88 022	78	4PK	21	6302	Steel
	GSP88 023	73	4PK	20	6301	Steel
	GSP88 014	80	6PK	24.5	6203	Plastic
	GSP88 015	90	6PK	25	6203	Plastic
	GSP88 016	80	6PK	26	6205	Plastic
	GSP88 017	90	6PK	26	6203	Plastic
	GSP88 018	76	6PK	26	6203	Plastic
	GSP88 019	82	6PK	26	6203	Plastic
	GSP88 020	76	8PK	32	6203	Plastic
	GSP89 001	70	4PK	17	6004	Steel
	GSP89 002	70	4PK	17.4	6303	Steel
	GSP89 003	70	4PK	19.5	6301	Steel
	GSP89 004	70	4PK	21.2	6004	Steel
	GSP89 005	70	4PK	21.6	6302	Steel
	GSP89 006	70	4PK	22.3	6301	Steel
	GSP89 007	70	5PK	23	6301	Steel
	GSP89 008	90	5PK	22	6203	Steel
	GSP89 016	84.5	4PK	21.5	6302	Steel
	GSP89 017	74	4PK	21.5	6302	Steel
	GSP89 009	70	4PK	21	6203	Plastic
	GSP89 010	70	6PK	26.3	6203	Plastic
	GSP89 011	76	6PK	28	6203	Plastic
	GSP89 012	90	6PK	27	6203	Plastic
	GSP89 013	109	6PK	27	6203	Plastic
GSP89 014	70	7PK	29	6004	Plastic	
GSP89 015	76	7PK	32.1	6203	Plastic	



Additional info.	Reference P/No.					
	OE #	DAYCO	Litens	GATES	Goodyear	ACDELCO
Flat without Flange	Toyota 88440-12190					
Flat with 1 Flange	Hyundai 57212-38100					
Flat without Flange			900033	38011		38011
Flat with 1 Flange	Hyundai 25281-39010					
Flat without Flange	GMDAT 96628780			38018		
Flat without Flange			900025	38005	49005	38005
Flat without Flange		89026	900024	38002		38002
Flat without Flange		231081	900052	38001	49001	38001
Flat with 1 Flange	Mitsubishi MD309783			38012		
Flat without Flange		89007	900022	38006		
Flat without Flange	Hyundai 25286-3B001					
Flat without Flange	Hyundai 25286-4A000					
Flat without Flange		231048	900007	38022	49008	38022
Flat without Flange	Hyundai/KIA 23129-22060, 23129-2D520, 23129-2D530, 97834-29010, 97834-2D520					
Flat without Flange	Hyundai/Kia 23129-29700					
Flat without Flange	Hyundai 97706-22061, 97834-22200					
Flat without Flange	Ssangyong A 661 200 30 70					
Flat without Flange	Hyundai 57212-38000					
Flat without Flange	Ssangyong A 162 200 30 70					
Flat without Flange		231018	900053	38007	49007	38007
Flat without Flange		231033	900036	38015		38015
Flat without Flange		231110	900021	38027		38027
Flat without Flange		231016	900005	38023		38023
Grooved with 2 Flange	Hyundai 57250-37320, 57250-3733					
Grooved with 2 Flange	Hyundai 57177-H1300					
Grooved with 2 Flange	Toyota 88440-17010			38031		
Grooved with 2 Flange	Mitsubishi MD310150					
Grooved with 2 Flange	Nissan B366-15-940					
Grooved with 2 Flange	Toyota 88440-16050					
Grooved with 2 Flange	Toyota 88440-12170					
Grooved with 2 Flange	Hyundai 57216-38000					
Grooved with 2 Flange	KIA OK201-15-930, OK202-15-930, OK202-15-940 Hyundai 23129-4F100, 23129-H1030, 23129-H1031					
Grooved with 2 Flange	Hyundai 23129-28600, 23129-28700, 97706-34000					
Grooved with 2 Flange		231029	900043	38030		38030
Grooved with 2 Flange		231015	900031	38008		38008
Grooved with 2 Flange		231086	900027	38009	49003	38009
Grooved with 2 Flange		89012	900037	38019	49016	38019
Grooved with 2 Flange		231014	900006	38024		38024
Grooved with 2 Flange	Hyundai 25285-3B000					
Grooved with 2 Flange		89034	900028	38016		











# PART 3

- GMB Serpentine Idler Pulley Application Guide



**GMB**

# GMB Idler Pulley



Part /no.	Maker	Model & Engine	Yr		
		Type	From ~ To		
GSP 88001	Toyota	OE # : 88440-12190		Idler Pulley	W/AC
GSP 88002	Hyundai	OE # : 57212-38100		Idler Pulley	W/AC
GSP 88003	Buick	Skylark 2.4L	1996-1998	Tensioner Pulley	
		Skylark 2.3L	1990-1995	Tensioner Pulley	
	Chevrolet	Cavalier 2.2L	2003	Tensioner Pulley	
		Cavalier 2.2L	2002	Idler Pulley	VIN 4
		Cavalier 2.2L	2002	Tensioner Pulley	VIN F
		Cavalier 2.2L	1998-2001	Idler Pulley	
		Cavalier 2.4L	1996-1998	Tensioner Pulley	
		Malibu 2.4L	1997-1998	Tensioner Pulley	
		Cavalier 2.3L	1995	Tensioner Pulley	
		Beretta 2.3L	1991-1994	Tensioner Pulley	
	Oldsmobile	Alero 2.2L	2002-2003	Tensioner Pulley	
		Alero 2.4L	1999	Tensioner Pulley	1st Design
		Achieva 2.4L	1996-1998	Tensioner Pulley	
		Achieva 2.3L	1992-1995	Tensioner Pulley	
		Cutlass Calais 2.3L	1988-1991	Tensioner Pulley	
		Cutlass Supreme 2.3L	1990-1991	Tensioner Pulley	
	Pontiac	Grand Am 2.2L	2002-2003	Tensioner Pulley	
		Sunfire 2.2L	2003	Tensioner Pulley	
		Sunfire 2.2L	2002	Idler Pulley	VIN 4
		Sunfire 2.2L	2002	Tensioner Pulley	VIN F
		Sunfire 2.2L	1998-2001	Idler Pulley	
		Grand Am 2.4L	1999	Tensioner Pulley	1st Design
		Grand Am 2.4L	1996-1998	Tensioner Pulley	
		Sunfire 2.4L	1996-1998	Tensioner Pulley	
		Grand Am 2.3L	1988-1995	Tensioner Pulley	
		Sunfire 2.3L	1995	Tensioner Pulley	
Saturn	Ion 2.2L	2003	Tensioner Pulley		
	L-Series 2.2L	2000-2003	Tensioner Pulley		
	VUE 2.2L	2002-2003	Tensioner Pulley		
GSP 88004	Hyundai	OE # : 25281-39010		Idler Pulley	W/AC
GSP 88005	Audi	TT 1.8L	2000~2003	Tensioner Pulley	
		TT Quattro 1.8L	2000~2003	Tensioner Pulley	
	Buick	Rainier 4.2L	2004	Tensioner Pulley	
	Chevrolet	Colorado 2.8L	2004	Tensioner Pulley	



# Application Guide



Part/ no.	Maker	Model & Engine	Yr		
		Type	From ~ To		
GSP 88005	Chevrolet	Colorado 3.5L	2004	Tensioner Pulley	
		Trailblazer 4.2L	2004	Tensioner Pulley	
		Trailblazer 4.2L-2002		Tensioner Pulley	
		Prizm 1.8L	1998~2002	Tensioner Pulley	
	Ford	Escape 2.0L	2001~2003	Idler Pulley	
		Focus 2.0L	2001~2002	Idler Pulley	W/DOHC Eng
		Cougar 2.5L (Canada)	2000~2002	Idler Pulley	
		Contour 2.0L	2000	Idler Pulley	
		Cougar 2.0L (Canada)	2000	Idler Pulley	
	GMC	Canyon 2.8L	2004	Tensioner Pulley	
		Canyon 3.5L	2004	Tensioner Pulley	
		Envoy 4.2L	2002~2004	Tensioner Pulley	
	GMDAT	OE # : 96628780		Idler Pulley	W/AC
		Nubira 2.0L	1999~2002	Tensioner Pulley	
		Leganza 2.2L	1999~2002	Tensioner Pulley	
	Isuzu	Ascender 4.2L	2003~2004	Tensioner Pulley	
		Rodeo 2.2L	1998~2003	Tensioner Pulley	
		Amigo 2.2L	1998~2000	Tensioner Pulley	
	Jeep	Grand Cherokee 4.0L	1999~2003	Tensioner Pulley	
		Wrangler 4.0L	2000~2003	Tensioner Pulley	
		TJ 4.0L (Canada)	2000~2003	Tensioner Pulley	
	Mazda	Tribute 2.0L	2001~2003	Idler Pulley	
	Mercury	Cougar 2.0L	1999~2002	Idler Pulley	
		Cougar 2.5L	2000~2002	Idler Pulley	
		Mystique 2.0L	1999~2000	Idler Pulley	
		Mystique 2.0L	1998	Idler Pulley	4-1998&Newer
	OldsMobile	Bravada 4.2L	2002~2004	Tensioner Pulley	
	Suzuki	Verona 2.5L	2004	Tensioner Pulley	
	Toyota	Celica 1.8L	2002~2003	Tensioner Pulley	
		Corolla 1.8L	1998~2003	Tensioner Pulley	
Matrix 1.8L		2003	Tensioner Pulley		
MR2 1.8L		2001~2003	Tensioner Pulley		
Spyder 1.8L		2001~2003	Tensioner Pulley		
Celica 1.8L		2001	Tensioner Pulley	GT	
V.W	Beetle 1.8L	1999~2004	Tensioner Pulley		
	GTI 1.8L	2004	Tensioner Pulley		
	Jetta 1.8L	2000~2004	Tensioner Pulley		

# GMB Idler Pulley



18

GMB Korea Corporation

Part /no.	Maker	Model & Engine	Yr		
		Type	From ~ To		
GSP 88005	V.W	Golf 2.0L	2004	Tensioner Pulley	
		Jetta 2.0L	2004	Tensioner Pulley	
		Beetle 2.0L	1998~2003	Tensioner Pulley	
		GTI 1.8L	2000~2001	Tensioner Pulley	
		Jetta 2.0L	1999~2000	Tensioner Pulley	
		GTI 2.0L	1999	Tensioner Pulley	
GSP 88006	Acura	SLX 3.5L	1998-1999	Tensioner Pulley	
	Buick	Lesabre 3.8L	1988	Tensioner Pulley	VIN C
	Chevrolet	Lumina APV 3.8L	1995	Idler Pulley	
	Ford	Windstar 3.0L	1996-2000	Idler Pulley	
		Taurus 3.0L	1997	Idler Pulley	
		Windstar 3.8L	1996-1997	Idler Pulley	
		Taurus 3.0L	1994-1995	Idler Pulley	W/O SHO
		E Van 7.3L Diesel	1994	Tensioner Pulley	
		F Pickup 7.3L Diesel	1994	Tensioner Pulley	W/6-Rb Belt
		Super Duty Pickup 7.3L Diesel	1994	Tensioner Pulley	W/6-Rb Belt
		Tempo 3.0L	1993	Idler Pulley	
		Probe 3.0L	1990-1992	Idler Pulley	
		Taurus 3.0L	1990-1992	Tensioner Pulley	W/O SHO
	Taurus 3.0L	1988-1989	Tensioner Pulley		
	Honda	Passport 3.2L	1998-2002	Tensioner Pulley	
	Isuzu	Axiom 3.5L	2002	Tensioner Pulley	
		Rodeo 3.2L	1998-2002	Tensioner Pulley	
		Trooper 3.5L	1998-2002	Tensioner Pulley	
		Vehicross 3.5L	1999-2001	Tensioner Pulley	
		Amigo 3.2L	1998-1999	Tensioner Pulley	
Mercury	Sable 3.0L	1994-1997	Idler Pulley	W/OHV Eng	
	Topaz 3.0L	1993	Idler Pulley		
	Sable 3.0L	1988-1992	Tensioner Pulley		
Oldsmobile	Silhouette 3.8L	1995	Idler Pulley		
Pontiac	Trans Sport 3.8L	1995	Idler Pulley		
GSP 88007	Buick	Century 2.5L	1987-1992	Tensioner Pulley	
		Century Estate Wagon 2.5L	1987-1989	Tensioner Pulley	
		Skyhawk 2.0L	1989	Tensioner Pulley	
		Skyhawk 2.0L	1987-1988	Tensioner Pulley	VIN 1
	Cadillac	Fleetwood 5.7L	1993	Tensioner Pulley	W/O HD Cool
	Chevrolet	G Van 7.4L	1992-1996	Tensioner Pulley	

# Application Guide



Part/ no.	Maker	Model & Engine	Yr		
		Type	From ~ To		
GSP 88007	Chevrolet	Camaro 3.1L	1990-1992	Tensioner Pulley	
		Lumina 2.5L	1990-1992	Tensioner Pulley	
		Celebrity 2.5L	1987-1990	Tensioner Pulley	
		Camaro 2.8L	1987-1989	Tensioner Pulley	
	Ford	Explorer 5.0L	1996-2001	Tensioner Pulley	
		Aerostar 3.0L	1990-1997	Idler Pulley	W/100mm Dia
		Aerostar 4.0L	1990-1995	Idler Pulley	
		Aerostar 4.0L	1990-1995	Tensioner Pulley	
		Explorer 4.0L	1991-1993	Idler Pulley	
		Ranger 4.0L	1990-1993	Idler Pulley	
		Ranger 4.0L	1990-1993	Tensioner Pulley	
	GMC	G Van 7.4L	1992-1996	Tensioner Pulley	
		Mazda	Navajo 4.0L	1991-1992	Tensioner Pulley
	Mercury	Mountaineer 5.0L	1997-2001	Tensioner Pulley	
	Oldsmobile	Cutlass Ciera 2.5L	1987-1992	Tensioner Pulley	
		Cutlass Cruiser 2.5L	1987-1992	Tensioner Pulley	
Pontiac	Firebird 3.1L	1990-1992	Tensioner Pulley		
	6000 2.5L	1987-1991	Tensioner Pulley		
	Firebird 2.8L	1987-1989	Tensioner Pulley		
	Fiero 2.5L	1987-1988	Tensioner Pulley		
GSP 88008	Acura	CL 3.2L	2001-2003	Tensioner Pulley	
		TL 3.2L	1999-2003	Tensioner Pulley	
		MDX 3.5L	2002	Tensioner Pulley	
		CL 3.0L	1997-2000	Tensioner Pulley	
Honda	Pilot 3.5L	2003	Tensioner Pulley		
AM General	Hummer 6.5L Diesel	1995-1997	Idler Pulley	W/AC	
	Hummer 5.7L	1995-1996	Tensioner Pulley		
	Hummer 6.5L Diesel	1994	Idler Pulley	W/O AC	
Buick	Century 3.1L	1998-2003	Tensioner Pulley		
	Skylark 3.1L	1998	Tensioner Pulley		
	Roadmaster 5.7L	1994-1996	Tensioner Pulley		
	Lesabre 3.8L	1988	Tensioner Pulley	VIN 3	
	Electra 3.8L	1986-1987	Idler Pulley		
	Electra Park Ave. 3.8L	1986-1987	Idler Pulley		
	Lesabre 3.8L	1986-1987	Idler Pulley		
Riviera 3.8L	1987	Idler Pulley			



# GMB Idler Pulley



20

GMB Korea Corporation

Part /no.	Maker	Model & Engine	Yr		
		Type	From ~ To		
GSP 88008	Buick	Century 3.8L	1986		Idler Pulley
		Century Estate Wagon 3.8L	1986		Idler Pulley
		Lesabre 3.0L	1986		Idler Pulley
	Cadillac	Escalade 5.3L	2002		Idler Pulley
		Escalade 6.0L	2002		Idler Pulley
		Escalade 5.7L	1999-2000		Idler Pulley
		Deville 4.6L	1994-1997		Idler Pulley
		Eldorado 4.6L	1993-1997		Idler Pulley
		Seville 4.6L	1993-1997		Idler Pulley
		Fleetwood 5.7L	1994-1996		Tensioner Pulley
		Allante 4.6L	1993		Idler Pulley
		Deville 4.9L	1992		Tensioner Pulley
		Eldorado 4.9L	1992		Tensioner Pulley
		Fleetwood 4.9L	1992		Tensioner Pulley
		Fleetwood Sixty Special 4.9L	1992		Tensioner Pulley
		Seville 4.9L	1992		Tensioner Pulley
		Cimarron 2.8L	1985-1986		Idler Pulley
		Chevrolet	Astro 4.3L	1996-2002	
	Blazer 4.3L		1996-2002		Idler Pulley-Smooth
	Express 4.3L		1996-2002		Idler Pulley-Smooth
	Impala 3.4L		2000-2003		Tensioner Pulley
	Monte Carlo 3.4L		2000-2003		Tensioner Pulley
	S Pickup 4.3L		1996-2002		Idler Pulley-Smooth
	Avalanche 5.3L		2002		Idler Pulley
	Avalanche 8.1L		2002		Idler Pulley-Smooth
	C & K Pickup 8.1L		2001-2002		Idler Pulley-Smooth
	Express 5.0L		1996-2002		Idler Pulley-Smooth
	Express 5.7L		1996-2002		Idler Pulley-Smooth
	Express 8.1L		2001-2002		Idler Pulley-Smooth
	Silverado Pickup 4.3L		1999-2002		Idler Pulley-Smooth
Silverado Pickup 4.8L	1999-2002			Idler Pulley	
Silverado Pickup 5.3L	1999-2002			Idler Pulley	
Silverado Pickup 6.0L	1999-2002			Idler Pulley	
Silverado Pickup 8.1L	2001-2002			Idler Pulley-Smooth	
Suburban 5.3L	2000-2002		Idler Pulley		
Suburban 6.0L	2000-2002		Idler Pulley		
Suburban 8.1L	2001-2002		Idler Pulley-Smooth		

# Application Guide



Part/ no.	Maker	Model & Engine	Yr		
		Type	From ~ To		
GSP 88008	Chevrolet	Tahoe 4.8L	2000-2002	Idler Pulley	
		Tahoe 5.3L	2000-2002	Idler Pulley	
		Lumina 3.1L	1998-2001	Tensioner Pulley	
		C & K Pickup 5.7L	1996-2000	Idler Pulley-Smooth	
		C & K Pickup 7.4L	1995-2000	Idler Pulley-Smooth	
		Express 7.4L	1996-2000	Idler Pulley-Smooth	
		Tahoe 5.7L	1996-2000	Idler Pulley-Smooth	
		C & K Pickup 5.0L	1996-1999	Idler Pulley-Smooth	
		Monte Carlo 3.1L	1998-1999	Tensioner Pulley	
		P Van 4.3L	1996-1999	Idler Pulley-Smooth	
		P Van 5.7L	1996-1999	Idler Pulley-Smooth	
		P Van 7.4L	1996-1999	Idler Pulley-Smooth	
		Suburban 5.7L	1996-1999	Idler Pulley-Smooth	
		Suburban 7.4L	1995-1999	Idler Pulley-Smooth	
		C & K Pickup 4.3L	1996-1998	Idler Pulley-Smooth	
		G Van 4.3L	1996-1998	Idler Pulley-Smooth	
		G Van 5.0L	1996-1998	Idler Pulley-Smooth	
		G Van 5.7L	1996-1998	Idler Pulley-Smooth	
		G Van 7.4L	1994-1998	Idler Pulley-Smooth	
		Venture 3.4L	1998	Tensioner Pulley	
		Camaro Z28 5.7L	1993-1997	Tensioner Pulley	
		Express 7.4L	1997	Tensioner Pulley	W/AP
		S Pickup 2.2L	1994-1997	Tensioner Pulley	
		Caprice 4.3L	1994-1996	Tensioner Pulley	
		Caprice 5.7L	1994-1996	Tensioner Pulley	
		G Van 5.7L	1988-1996	Tensioner Pulley	W/AC
		Impala SS 5.7L	1994-1996	Tensioner Pulley	
		Astro 4.3L	1987-1995	Tensioner Pulley	W/AC
		Blazer 4.3L	1995	Tensioner Pulley	
		C & K Pickup 4.3L	1990-1995	Tensioner Pulley	
		C & K Pickup 5.0L	1990-1995	Tensioner Pulley	
		C & K Pickup 5.7L	1992-1995	Tensioner Pulley	
		C & K Pickup 6.5L Diesel	1995	Tensioner Pulley	VIN P
C & K Pickup 6.5L Diesel	1995	Tensioner Pulley	W/Turbo,VIN F		
Camaro 3.4L	1993-1995	Tensioner Pulley			
G Van 4.3L	1992-1995	Idler Pulley			
G Van 4.3L	1987-1995	Tensioner Pulley	W/AC		

# GMB Idler Pulley



22

GMB Korea Corporation

Part /no.	Maker	Model & Engine	Yr		
		Type	From ~ To		
GSP 88008	Chevrolet	G Van 5.0L	1992-1995	Idler Pulley	
		G Van 5.0L	1987-1995	Tensioner Pulley	W/AC
		G Van 5.7L	1992-1995	Idler Pulley	
		LLV (Postal Vehicle) 2.2L	1994-1995	Tensioner Pulley	
		S Pickup 4.3L	1991-1995	Tensioner Pulley	
		Suburban 5.7L	1992-1995	Tensioner Pulley	
		Suburban 6.5L Diesel	1995	Tensioner Pulley	W/Turbo, VIN F
		Tahoe 5.7L	1995	Tensioner Pulley	
		Tahoe 6.5L Diesel	1995	Tensioner Pulley	
		Blazer Compact 4.3L	1991-1994	Tensioner Pulley	
		Blazer Full Size 5.7L	1992-1994	Tensioner Pulley	
		Blazer Full Size 6.5L Diesel	1994	Tensioner Pulley	
		C & K Pickup 6.5L Diesel	1994	Tensioner Pulley	
		C & K Pickup 7.4L	1994	Idler Pulley	
		Suburban 6.5L Diesel	1994	Tensioner Pulley	
		Suburban 7.4L	1994	Idler Pulley	
		C & K Pickup 7.4L	1988-1993	Idler Pulley	W/AC
		G Van 7.4L	1992-1993	Idler Pulley	
		S Pickup 2.8L	1989-1993	Tensioner Pulley	
		Suburban 7.4L	1988-1993	Idler Pulley	W/AC
		Astro 4.3L	1990-1991	Idler Pulley	W/AC
		Blazer Full Size 5.7L	1989-1991	Tensioner Pulley	W/AC
		C & K Pickup 5.7L	1988-1991	Tensioner Pulley	W/AC
		Suburban 5.7L	1989-1991	Tensioner Pulley	W/AC
		Blazer Compact 4.3L	1988-1990	Tensioner Pulley	W/AC
		S Pickup 4.3L	1988-1990	Tensioner Pulley	W/AC
		Blazer Compact 2.8L	1989	Tensioner Pulley	
		C & K Pickup 4.3L	1988-1989	Tensioner Pulley	W/AC
		C & K Pickup 5.0L	1988-1989	Tensioner Pulley	W/AC
		G Van 7.4L	1989	Idler Pulley	W/AC
		Blazer Compact 2.8L	1988	Tensioner Pulley	Exc S10
		R & V Pickup 7.4L	1988	Idler Pulley	W/AC
		R & V Pickup 7.4L	1988	Tensioner Pulley	
		S Pickup 2.8L	1988	Tensioner Pulley	Exc S10
Suburban 7.4L	1988	Tensioner Pulley			
Blazer Compact 2.8L	1987	Tensioner Pulley			
G Van 5.7L	1987	Tensioner Pulley	W/AC, VIN K		



# Application Guide



Part/ no.	Maker	Model & Engine	Yr		
		Type	From ~ To		
GSP 88008	Chevrolet	S Pickup 2.8L	1987	Tensioner Pulley	
		Cavalier 2.8L	1985-1986	Idler Pulley	
	Dodge	Dakota 4.7L	2000-2003	Idler Pulley	
		Durango 4.7L	2000-2003	Idler Pulley	
		Ram Pickup 3.7L	2002-2003	Idler Pulley	
		Ram Pickup 4.7L	2002-2003	Idler Pulley	
	Eagle	Premier 3.0L	1988-1990	Idler Pulley	
		Premier 2.5L	1988-1989	Idler Pulley	
	Ford	E Van 4.2L	1997-2003	Idler Pulley-Smooth	W/AC
		Explorer 4.0L	2002-2003	Idler Pulley	
		F Pickup 4.2L	1997-2003	Idler Pulley-Smooth	W/AC
		Windstar 3.8L	1998-2003	Idler Pulley	
		Escort 2.0L	2001-2002	Idler Pulley	
		Escort 2.0L	2001-2002	Tensioner Pulley	
		Ranger 4.0L	1994-2002	Idler Pulley	
		Taurus 3.0L	1998-2002	Idler Pulley	W/12-Valve Eng
		Thunderbird 3.9L	2002	Idler Pulley	
		Thunderbird 3.9L	2002	Tensioner Pulley	
		Explorer 4.0L	2001	Idler Pulley-Smooth	
		Explorer 5.0L	1998-2001	Idler Pulley-AC Brkt.	
		Ranger 2.5L	1998-2001	Idler Pulley	
		Ranger 3.0L Flex	1999-2001	Idler Pulley	
		Super Duty Van 4.2L	2001	Idler Pulley-Smooth	W/AC
		Taurus 3.0L Flex	1997-2001	Idler Pulley	
		Contour 2.5L	1995-2000	Idler Pulley	
		Escort 2.0L	1998-2000	Idler Pulley	W/SOHC
		Escort 2.0L	1997-2000	Tensioner Pulley	W/SOHC
		Explorer 4.0L	1994-2000	Idler Pulley	
		Aerostar 4.0L	1996-1997	Idler Pulley	
		Contour 2.0L	1995-1997	Idler Pulley	
		Escort 2.0L	1997	Idler Pulley	
		F Pickup 7.5L	1988-1997	Tensioner Pulley	
		Super Duty Pickup 7.5L	1988-1997	Tensioner Pulley	
Thunderbird 3.8L		1996-1997	Idler Pulley		
E Van 7.5L		1988-1996	Tensioner Pulley		
Escort 1.9L		1991-1996	Tensioner Pulley		
Super Duty Van 7.5L	1996	Tensioner Pulley			

# GMB Idler Pulley



24

GMB Korea Corporation

Part /no.	Maker	Model & Engine	Yr		
		Type	From ~ To		
GSP 88008	Ford	Mustang 5.0L	1995	Idler Pulley	
		Thunderbird 3.8L	1989-1995	Idler Pulley	W/O AC, W/O Schgr
		E Van 7.3L Diesel	1994	Idler Pulley-Smooth	
		F Pickup 7.3L Diesel	1994	Idler Pulley-Smooth	W/6-Rib Belt
		Super Duty Pickup 7.3L Diesel	1994	Idler Pulley-Smooth	W/6-Rib Belt
		Mustang 2.3L	1987-1993	Tensioner Pulley-Driver Side	
		Country Squire 5.0L	1990-1991	Idler Pulley	
		Ltd Crown Victoria 5.0L	1990-1991	Idler Pulley	
		Ltd Crown Victoria 5.8L	1990-1991	Idler Pulley	W/Police Pkg
		Thunderbird 2.3L	1988	Tensioner Pulley-Driver Side	
	Thunderbird 2.3L	1987	Tensioner Pulley-Driver Side		
	GMC	Safari 4.3L	1996-2002	Idler Pulley-Smooth	
		Savana 4.3L	1996-2002	Idler Pulley-Smooth	
		Sonoma 4.3L	1996-2002	Idler Pulley-Smooth	
		C & K Pickup 8.1L	2001-2002	Idler Pulley-Smooth	
		Jimmy 4.3L(Canada)	2002	Idler Pulley-Smooth	
		Savana 5.0L	1996-2002	Idler Pulley-Smooth	
		Savana 5.7L	1996-2002	Idler Pulley-Smooth	
		Savana 8.1L	2001-2002	Idler Pulley-Smooth	
		Sierra Pickup 4.3L	1999-2002	Idler Pulley-Smooth	
		Sierra Pickup 4.8L	1999-2002	Idler Pulley	
		Sierra Pickup 5.3L	1999-2002	Idler Pulley	
		Sierra Pickup 6.0L	1999-2002	Idler Pulley	
		Sierra Pickup 8.1L	2001-2002	Idler Pulley-Smooth	
		Yukon 4.8L	2000-2002	Idler Pulley	
		Yukon 5.3L	2000-2002	Idler Pulley	
		Yukon 6.0L	2000-2002	Idler Pulley	
		Yukon 8.1L	2001-2002	Idler Pulley-Smooth	
		Jimmy 4.3L	1996-2001	Idler Pulley-Smooth	
		C & K Pickup 5.7L	1996-2000	Idler Pulley-Smooth	
		C & K Pickup 7.4L	1995-2000	Idler Pulley-Smooth	
		Envoy 4.3L	1998-2000	Idler Pulley-Smooth	
Savana 7.4L		1996-2000	Idler Pulley-Smooth		
Yukon 5.7L	1996-2000	Idler Pulley-Smooth			
C & K Pickup 5.0L	1996-1999	Idler Pulley-Smooth			
P Van 4.3L	1996-1999	Idler Pulley-Smooth			
P Van 5.7L	1996-1999	Idler Pulley-Smooth			

# Application Guide



Part/ no.	Maker	Model & Engine	Yr		
		Type	From ~ To		
GSP 88008	GMC	P Van 7.4L	1996-1999	Idler Pulley-Smooth	
		Suburban 5.7L	1996-1999	Idler Pulley-Smooth	
		Suburban 7.4L	1995-1999	Idler Pulley-Smooth	
		C & K Pickup 4.3L	1996-1998	Idler Pulley-Smooth	
		Savana 7.4L	1997	Tensioner Pulley	W/AP
		Sonoma 2.2L	1994-1997	Tensioner Pulley	
		G Van 4.3L	1996	Idler Pulley-Smooth	
		G Van 5.7L	1996	Idler Pulley-Smooth	
		G Van 5.7L	1987-1996	Tensioner Pulley	W/AC
		G Van 7.4L	1994-1996	Idler Pulley-Smooth	
		C & K Pickup 4.3L	1990-1995	Tensioner Pulley	
		C & K Pickup 5.0L	1990-1995	Tensioner Pulley	
		C & K Pickup 5.7L	1992-1995	Tensioner Pulley	
		C & K Pickup 6.5L Diesel	1995	Tensioner Pulley	VIN P
		C & K Pickup 6.5L Diesel	1995	Tensioner Pulley	W/Turbo, VIN F
		G Van 4.3L	1992-1995	Idler Pulley	
		G Van 4.3L	1987-1995	Tensioner Pulley	W/AC
		G Van 5.0L	1992-1995	Idler Pulley	
		G Van 5.0L	1987-1995	Tensioner Pulley	W/AC
		G Van 5.7L	1992-1995	Idler Pulley	
		Jimmy 4.3L	1992-1995	Tensioner Pulley	
		Safari 4.3L	1987-1995	Tensioner Pulley	W/AC
		Sonoma 4.3L	1991-1995	Tensioner Pulley	
		Suburban 5.7L	1992-1995	Tensioner Pulley	
		Suburban 6.5L Diesel	1995	Tensioner Pulley	VIN P
		Suburban 6.5L Diesel	1995	Tensioner Pulley	W/Turbo, VIN F
	Yukon 5.7L	1992-1995	Tensioner Pulley		
	Yukon 6.5L Diesel	1995	Tensioner Pulley	VIN P	
	Jaguar	S-Type 4.0L-	2000-2002	Idler Pulley	
		S-Type 4.0L	2000-2002	Tensioner Pulley	
	Jeep	Grand Cherokee 4.7L	1999-2003	Idler Pulley	
		Liberty 3.7L	2002-2003	Idler Pulley	
		TJ 2.5L(Canada)-	2000	Idler Pulley-Adjustable	
Lincoln	LS 3.0L	2000-2002	Idler Pulley		
	LS 3.9L	2000-2002	Idler Pulley		
	LS 3.9L	2000-2002	Tensioner Pulley		
	Town Car 5.0L	1990	Idler Pulley		

# GMB Idler Pulley



26

GMB Korea corporation

Part /no.	Maker	Model & Engine	Yr		
		Type	From ~ To		
GSP 88008	Mazda	B4000 Pickup 4.0L	1994-2002	Idler Pulley	
		B2500 Pickup 2.5L	1998-2001	Idler Pulley	
		B3000 Pickup 3.0L	2001	Idler Pulley	
		B3000 Pickup 3.0L Flex-	2000	Idler Pulley	
		B3000 Pickup 3.0L	1998	Idler Pulley	
		Navajo 4.0L	1994	Idler Pulley	
	Mercury	Sable 3.0L	2003	Idler Pulley	W/OHV Eng
		Mountaineer 4.0L	1998-2002	Idler Pulley	
		Sable 3.0L	1998-2002	Idler Pulley	W/12-Valve Eng
		Cougar 2.0L	2001	Idler Pulley	
		Mountaineer 5.0L	1998-2001	Idler Pulley-AC Brkt.	
		Sable 3.0L Flex-	2001	Idler Pulley	
		Mystique 2.5L	1995-2000	Idler Pulley	
		Cougar 2.5L	1999	Idler Pulley	
		Trancer 2.0L	1997-1999	Idler Pulley	
		Trancer 2.0L	1997-1999	Tensioner Pulley	
		Cougar 3.8L	1994-1997	Idler Pulley	
		Mountaineer 5.0L	1997	Idler Pulley	
		Mystique 2.0L	1995-1997	Idler Pulley	
		Trancer 1.9L	1991-1996	Tensioner Pulley	
		Colony Park 5.0L	1989-1991	Idler Pulley	
		Cougar 5.0L	1991	Idler Pulley	
	Grand Marquis 5.0L	1989-1991	Idler Pulley		
	Cougar 3.8L	1989-1990	Idler Pulley	W/O AC,W/O Schgr	
	Oldsmobile	Bravada 4.3L	1999-2001	Idler Pulley-Smooth	
		Aurora 4.0L	1995-1999	Idler Pulley	
		Achieva 3.1L	1998	Tensioner Pulley	
		Bravada 4.3L	1998	Idler Pulley-Smooth	W/AC
		Silhouette 3.4L	1998	Tensioner Pulley	
		Bravada 4.3L	1996-1997	Idler Pulley	
Bravada 4.3L		1991-1994	Tensioner Pulley		
Firenza 2.8L	1985-1986	Idler Pulley			
Pontiac	Grand Prix 3.1L	1998-2003	Tensioner Pulley		
	Grand Am 3.1L	1998	Tensioner Pulley		
	Trans Sport 3.4L	1998	Tensioner Pulley		
	Firebird Formula 5.7L	1993-1997	Tensioner Pulley		
	Firebird Trans AM 5.7L	1993-1997	Tensioner Pulley		



# Application Guide



Part/ no.	Maker	Model & Engine	Yr		
		Type	From ~ To		
GSP 88008	Pontiac	Firebird 3.4L	1993~1995	Tensioner Pulley	
		Firebird Trans AM 3.8L	1989	Idler Pulley	
		Firebird Trans AM 3.8L	1989	Tensioner Pulley	
	Workhorse	P Chassis 4.3L	2002	Idler Pulley-Smooth	
		P Chassis 5.7L	2000~2002	Idler Pulley-Smooth	
GSP 88009	Buick	Skylark 3.0L	1986~1988	Tensioner Pulley	
		Century 3.8L	1986~1988	Tensioner Pulley	
		Century Estate Wagon 3.8L	1986~1988	Tensioner Pulley	
		Somerset 3.0L	1986~1987	Tensioner Pulley	
		Electra 3.8L	1986~1987	Tensioner Pulley	
		Electra Park Avenue 3.8L	1986~1987	Tensioner Pulley	
		Lesabre 3.8L	1986~1987	Tensioner Pulley	
		Riviera 3.8L	1986~1987	Tensioner Pulley	
		Regal 3.8L	1986~1987	Tensioner Pulley	W/Turbo;Grand National
		Somerset Regal 3.0L	1985	Tensioner Pulley	
		Century 4.3L DIESEL	1982~1985	Tensioner Pulley	
		Century Estate Wagon 4.3L DIESEL	1984~1985	Tensioner Pulley	
		Electra 4.3L DIESEL	1985	Tensioner Pulley	
		Electra Park Avenue 4.3L DIESEL	1985	Tensioner Pulley	
		Regal 4.3L DIESEL	1982~1985	Tensioner Pulley	
	Cadillac	Deville 4.3L DIESEL	1985	Tensioner Pulley	
		Fleetwood 4.3L DIESEL	1985	Tensioner Pulley	
	Chevrolet	LLV(Postal Vehicle) 2.5L	1987~1991	Tensioner Pulley	
		S Pick up 2.5L	1987~1991	Tensioner Pulley	
		Astro 2.5L	1987~1990	Tensioner Pulley	
		Blazer Compact 2.5L	1987~1988	Tensioner Pulley	
		Celebrity 4.3L DIESEL	1982~1985	Tensioner Pulley	
		Malibu 4.3L DIESEL	1982	Tensioner Pulley	
		Monte Carlo 4.3L DIESEL	1982	Tensioner Pulley	
	GMC	Sonoma 2.5L	1991~1992	Tensioner Pulley	
		S Pick up 2.5L	1987~1990	Tensioner Pulley	
		Safari 2.5L	1987~1990	Tensioner Pulley	
		Jimmy Compact 2.5L	1987~1988	Tensioner Pulley	
	Mitsubishi	OE # : MD309783		Idler Pulley	W/AC
	OldsMobile	Cutlass Calais 3.0L	1988	Tensioner Pulley	
Cutlass Ciera 3.8L		1986~1988	Tensioner Pulley		
Cutlass Cruiser 3.8L		1987~1988	Tensioner Pulley		

# GMB Idler Pulley



28

GMB Korea corporation

Part /no.	Maker	Model & Engine	Yr		
		Type	From ~ To		
GSP 88009	OldsMobile	Calais 3.0L	1985~1987	Tensioner Pulley	
		Delta 88 3.8L	1986~1987	Tensioner Pulley	
		Ninety Eight 3.8L	1986~1987	Tensioner Pulley	
		Toronado 3.8L	1986~1987	Tensioner Pulley	
		Toronado Trofeo 3.8L	1987	Tensioner Pulley	
		Cutlass Ciera 4.3L DIESEL	1982~1985	Tensioner Pulley	
		Cutlass Cruiser 4.3L DIESEL	1984~1985	Tensioner Pulley	
		Ninety Eight 4.3L DIESEL	1985	Tensioner Pulley	
		Cutlass Calais 4.3L DIESEL	1982~1984	Tensioner Pulley	
		Cutlass Supreme 4.3L DIESEL	1982~1984	Tensioner Pulley	
	Pontiac	Bonneville 3.8L	1987~1988	Tensioner Pulley	
		Grand AM 3.0L	1985~1987	Tensioner Pulley	
		6000 4.3L DIESEL	1982~1985	Tensioner Pulley	
GSP 88010	AM General	Hummer 6.5L Diesel	1994~2001	Tensioner Pulley	
		Hummer 5.7L	1995~1996	Idler Pulley	W/AC
	Buick	Lesabre 3.8L	1999~2003	Tensioner Pulley	
		Park Ave. 3.8L	1999~2003	Tensioner Pulley	W/O Schgr
		Park Ave. 3.8L	1996~2003	Tensioner Pulley	W/Schgr
		Regal 3.8L	1999~2003	Tensioner Pulley	W/O Schgr
		Regal 3.8L	1997~2003	Tensioner Pulley	W/Schgr
		Rendezvous 3.4L	2002	Idler Pulley	2 Reqd
		Riviera 3.8L	1999	Tensioner Pulley	W/O Schgr
		Riviera 3.8L	1996~1999	Tensioner Pulley	W/Schgr
		Riviera 3.8L	1995~1997	Idler Pulley-Smooth	W/Schgr
		Park Ave. 3.8L	1991~1995	Idler Pulley-Smooth	W/Schgr
		Park Ave. 3.8L	1991~1995	Tensioner Pulley	W/Schgr,2 Reqd
		Riviera 3.8L	1995	Tensioner Pulley	W/Schgr,2 Reqd
		Roadmaster 5.7L	1992~1993	Tensioner Pulley	
		Roadmaster 5.0L	1991	Tensioner Pulley	
		Skyhawk 2.0L	1988	Tensioner Pulley	VIN K
		Skyhawk 2.0L	1987	Tensioner Pulley	VIN KM
	Cadillac	Deville 4.6L	1995~2003	Tensioner Pulley-Serp Drive	
		Seville 4.6L	1995~2003	Tensioner Pulley-Serp Drive	
Eldorado 4.6L		1995~2003	Tensioner Pulley-Serp Drive		
Deville 4.6L		1994	Tensioner Pulley		
Eldorado 4.6L		1993~1994	Tensioner Pulley		
Seville 4.6L		1993~1994	Tensioner Pulley		

# Application Guide



Part/ no.	Maker	Model & Engine	Yr		
		Type	From ~ To		
GSP 88010	Cadillac	Allante 4.6L	1993	Tensioner Pulley	
		Fleetwood 5.7L	1993	Tensioner Pulley	W/HD Cool
		Brougham 5.0L	1991-1992	Tensioner Pulley	
		Brougham 5.7L	1990-1992	Tensioner Pulley	
		Allante 4.5L	1989	Tensioner Pulley	
		Deville 4.5L	1988-1989	Tensioner Pulley	
		Eldorado 4.5L	1988-1989	Tensioner Pulley	
		Fleetwood 4.5L	1989	Tensioner Pulley	
		Fleetwood Sixty Special 4.5L	1988-1989	Tensioner Pulley	
		Seville 4.5L	1988-1989	Tensioner Pulley	
		Allante 4.1L	1987-1988	Tensioner Pulley	
		Fleetwood Delegation 4.5L	1988	Tensioner Pulley	
		Deville 4.1L	1985-1987	Tensioner Pulley	
		Eldorado 4.1L	1986-1987	Tensioner Pulley	
		Fleetwood Delegation 4.1L	1987	Tensioner Pulley	
		Fleetwood Seventy Five 4.1L	1986-1987	Tensioner Pulley	
		Fleetwood Sixty Special 4.1L	1987	Tensioner Pulley	
		Seville 4.1L	1986-1987	Tensioner Pulley	
	Fleetwood 4.1L	1985	Tensioner Pulley		
	Chevrolet	Corvette 5.7L	1997-2003	Idler Pulley	
		Impala 3.8L	2000-2003	Tensioner Pulley	
		Malibu 3.1L	1997-2003	Idler Pulley	2 Reqd
		Monte Carlo 3.8L	1999-2003	Tensioner Pulley	
		Trailblazer 4.2L	2002	Idler Pulley	
		Venture 3.4L	1999-2002	Idler Pulley	2 Reqd
		C & K Pickup 6.5L Diesel	1996-2002	Tensioner Pulley	
		C & K Pickup 8.1L	2001-2002	Tensioner Pulley	
		Camaro 3.8L	1997-2002	Idler Pulley	
		Camaro 3.8L	1998-2002	Tensioner Pulley	
		Express 6.5L Diesel	1996-2002	Tensioner Pulley	
		Express 8.1L	2001-2002	Tensioner Pulley	
		Silverado Pickup 6.6L Diesel	2001	Tensioner Pulley	
Camaro Z28 5.7L		1998-2000	Idler Pulley		
Lumina 3.8L	1999	Tensioner Pulley			
P Van 6.5L Diesel-	1998-1999	Tensioner Pulley			
Silverado Pickup 6.5L Diesel	1999	Tensioner Pulley			
Suburban 6.5L Diesel	1996-1999	Tensioner Pulley			

# GMB Idler Pulley



30

GMB Korea Corporation

Part /no.	Maker	Model & Engine	Yr		
		Type	From ~ To		
GSP 88010	Chevrolet	Tahoe 6.5L Diesel	1996-1999	Tensioner Pulley	
		G Van 6.5L Diesel	1996-1998	Tensioner Pulley	
		Lumina 3.8L	1998	Idler Pulley	
		Monte Carlo 3.8L	1998	Idler Pulley	
		P Van 6.5L Diesel	1996-1997	Tensioner Pulley	Exc Mtr Home
		Camaro 3.8L	1996	Idler Pulley-Smooth	
		Blazer 4.3L	1995	Idler Pulley	W/AC
		C & K Pickup 4.3L	1988-1995	Idler Pulley	W/AC
		C & K Pickup 5.0L	1988-1995	Idler Pulley	W/AC
		C & K Pickup 5.7L	1988-1995	Idler Pulley	W/AC
		Camaro 3.8L	1995	Idler Pulley	
		G Van 6.5L Diesel	1995	Tensioner Pulley	VIN P
		P Van 6.5L Diesel	1995	Tensioner Pulley	W/Turbo,VIN F,Exc Mtr Home
		S Pickup 4.3L	1988-1995	Idler Pulley	W/AC
		Suburban 5.7L	1989-1995	Idler Pulley	W/AC
		Tahoe 5.7L	1995	Idler Pulley	W/AC
		Blazer Compact 4.3L	1988-1994	Idler Pulley	W/AC
		Blazer Full Size 5.7L	1989-1994	Idler Pulley	W/AC
		G Van 6.5L Diesel	1994	Tensioner Pulley	
		P Van 6.5L Diesel	1994	Tensioner Pulley	Exc Mtr Home
		Caprice 4.3L	1992-1993	Tensioner Pulley	
		Caprice 5.0L	1989-1993	Tensioner Pulley	
		Caprice 5.7L	1989-1993	Tensioner Pulley	
		Astro 4.3L	1992	Idler Pulley-Smooth	
		Camaro 5.0L	1988-1992	Tensioner Pulley	
		Camaro Z28 5.0L	1991-1992	Tensioner Pulley	
		Camaro Z28 5.7L	1991-1992	Tensioner Pulley	
		G Van 4.3L	1987-1991	Idler Pulley	W/AC
		G Van 5.0L	1987-1991	Idler Pulley	W/AC
		G Van 5.7L	1989-1991	Idler Pulley	W/AC
		Camaro Iroc-Z 5.0L	1988-1990	Tensioner Pulley	
		Camaro Iroc-Z 5.7L	1988-1990	Tensioner Pulley	
		Caprice 4.3L	1989-1990	Tensioner Pulley	
		Astro 4.3L	1987-1989	Idler Pulley	W/AC
G Van 5.7L	1988	Idler Pulley	W/AC, VIN K		
Corvette 5.7L	1984-1987	Tensioner Pulley			
G Van 5.7L	1987	Idler Pulley	W/AC, VIN M		



# Application Guide



Part/ no.	Maker	Model & Engine	Yr		
		Type	From ~ To		
GSP 88010	Ford	Mustang 3.8L	1999-2003	Idler Pulley	
		Ranger 2.3L	2001-2002	Tensioner Pulley	
		Ranger 3.0L	2001-2002	Idler Pulley	
		Ranger 3.0L	2001-2002	Tensioner Pulley	
		Taurus 3.0L	1996-2003	Tensioner Pulley	W/OHV Eng
		ZX2 2.0L	2001-2002	Idler Pulley	W/AC
		ZX2 2.0L	2001-2002	Tensioner Pulley	
		Explorer 5.0L	1998-2001	Idler Pulley-Alt Brkt.	
		Mustang 4.6L	2001	Idler Pulley-Inner	W/SOHC
		Ranger 2.5L	1998-2001	Tensioner Pulley	
		Ranger 3.0L Flex	1999-2001	Tensioner Pulley	
		Taurus 3.0L Flex	1993-2001	Tensioner Pulley	
		Contour 2.5L	1995-2000	Tensioner Pulley	
		Escort 2.0L	2000	Idler Pulley	W/DOHC, W/AC
		Escort 2.0L	1998-2000	Tensioner Pulley	W/DOHC
		Mustang 4.6L	2000	Idler Pulley-Inner	
		Windstar 3.0L	1999-2000	Tensioner Pulley	
		Crown Victoria 4.6L	1992-1999	Idler Pulley	
		Crown Victoria 4.6L	1992-1999	Tensioner Pulley	
		Escort 2.0L	1998-1999	Idler Pulley	W/DOHC
		Mustang 4.6L	1996-1999	Idler Pulley	
		Mustang 4.6L	1996-1999	Tensioner Pulley	
		Contour 2.0L	1998	Idler Pulley	2-98 & Older
		Mustang 3.8L	1998	Idler Pulley	9-98 & Newer
		Ranger 3.0L	1993-1998	Idler Pulley	
		Ranger 3.0L	1992-1998	Tensioner Pulley	
		Aerostar 3.0L	1995-1997	Tensioner Pulley	
		Explorer 5.0L	1997	Idler Pulley	
		Ranger 2.3L	1990-1997	Tensioner Pulley	
		Taurus 3.4L	1997	Tensioner Pulley	
		Thunderbird 4.6L	1994-1997	Idler Pulley	
		Thunderbird 4.6L	1994-1997	Tensioner Pulley	
Bronco 5.0L	1993-1996	Tensioner Pulley			
Bronco 5.8L	1991-1996	Idler Pulley	W/Fact AC		
Bronco 5.8L	1993-1996	Tensioner Pulley			
E Van 5.0L	1993-1996	Tensioner Pulley			
E Van 5.8L	1993-1996	Tensioner Pulley			

# GMB Idler Pulley



32

GMB Korea Corporation

Part /no.	Maker	Model & Engine	Yr		
		Type	From ~ To		
GSP 88010	Ford	F Pickup 5.0L	1993-1996	Tensioner Pulley	
		F Pickup 5.8L	1993-1996	Tensioner Pulley	
		E Van 5.8L	1990-1995	Idler Pulley	W/Fact AC
		F Pickup 5.8L	1990-1995	Idler Pulley	W/Fact AC
		Mustang 5.0L	1984-1995	Tensioner Pulley	
		Taurus 3.0L	1993-1995	Tensioner Pulley	W/O SHO
		Thunderbird 3.8L	1989-1995	Tensioner Pulley-Smooth	W/O Schgr
		Windstar 3.0L	1995	Tensioner Pulley	
		E Van 5.0L	1990-1994	Idler Pulley	W/Fact AC
		Tempo 3.0L	1992-1994	Tensioner Pulley-Serp Drive	
		E Van 7.3L Diesel	1993	Tensioner Pulley	
		F Pickup 7.3L Diesel	1993	Tensioner Pulley	
		Super Duty Pickup 7.3L Diesel	1993	Tensioner Pulley	
		E Van 7.3L Diesel	1992	Tensioner Pulley-Serp Drive	
		F Pickup 7.3L Diesel	1992	Tensioner Pulley-Serp Drive	
		Probe 3.0L	1990-1992	Tensioner Pulley-Serp Drive	
		Probe 3.0L	1990-1992	Tensioner Pulley-WP Drive	
		Super Duty Pickup 7.3L Diesel	1992	Tensioner Pulley-Serp Drive	
		Taurus 2.5L	1986-1991	Tensioner Pulley	
		Bronco Full Size 5.8L	1990	Idler Pulley	W/Fact AC
		Thunderbird 5.0L	1983-1988	Tensioner Pulley	
		Country Squire 5.0L	1982-1985	Tensioner Pulley	
		Ltd 5.0L	1984-1985	Tensioner Pulley	
		Ltd Crown Victoria 5.0L	1982-1985	Tensioner Pulley	
		Escort 1.6L	1983	Tensioner Pulley	
		EXP 1.6L	1983	Tensioner Pulley	
		Mustang 5.0L	1983	Tensioner Pulley-Serp Drive	
		Ltd 4.2L	1982	Tensioner Pulley	
		Ltd 5.0L	1982	Tensioner Pulley	
		Ltd Crown Victoria 4.2L	1982	Tensioner Pulley	
	Mustang 4.2L	1981-1982	Tensioner Pulley		
	Mustang 5.0L	1982	Tensioner Pulley		
	Thunderbird 4.2L	1982	Tensioner Pulley		
	GMC	Envoy 4.2L	2002	Idler Pulley	
	C & K Pickup 6.5L Diesel	1996-2002	Tensioner Pulley		
	C & K Pickup 8.1L	2001-2002	Tensioner Pulley		
	Savana 6.5L Diesel	1996-2002	Tensioner Pulley		

# Application Guide



Part/ no.	Maker	Model & Engine	Yr				
		Type	From ~ To				
GSP 88010	GMC	Savana 8.1L	2001-2002	Tensioner Pulley			
		Sierra Pickup 6.6L Diesel	2001	Tensioner Pulley			
		P Van 6.5L Diesel	1998-1999	Tensioner Pulley			
		Sierra Pickup 6.5L Diesel	1999	Tensioner Pulley			
		Suburban 6.5L Diesel	1996-1999	Tensioner Pulley			
		P Van 6.5L Diesel	1996-1997	Tensioner Pulley	Exc Mtr Home		
		Yukon 6.5L Diesel	1996-1997	Tensioner Pulley			
		G Van 6.5L Diesel	1996	Tensioner Pulley			
		C & K Pickup 4.3L	1988-1995	Idler Pulley	W/AC		
		C & K Pickup 5.0L	1988-1995	Idler Pulley	W/AC		
		C & K Pickup 5.7L	1988-1995	Idler Pulley	W/AC		
		G Van 6.5L Diesel	1995	Tensioner Pulley	VIN P		
		Jimmy 4.3L	1992-1995	Idler Pulley	W/AC		
		P Van 6.5L Diesel	1995	Tensioner Pulley	VIN P,Exc Mtr Home		
		P Van 6.5L Diesel	1995	Tensioner Pulley	W/Turbo, VIN F,Exc Mtr Home		
		Sonoma 4.3L	1991-1995	Idler Pulley	W/AC		
		Suburban 5.7L	1989-1995	Idler Pulley	W/AC		
		Yukon 5.7L	1992-1995	Idler Pulley	W/AC		
		G Van 6.5L Diesel	1994	Tensioner Pulley			
		P Van 6.5L Diesel	1994	Tensioner Pulley	Exc Mtr Home		
		Typhoon 4.3L	1993	Idler Pulley	W/AC		
		Safari 4.3L	1992	Idler Pulley-Smooth			
		Syclone 4.3L	1992	Idler Pulley	W/AC, W/Turbo		
		Typhoon 4.3L	1992	Idler Pulley	W/AC, W/Turbo		
		G Van 4.3L	1987-1991	Idler Pulley	W/AC		
		G Van 5.0L	1987-1991	Idler Pulley	W/AC		
		G Van 5.7L	1989-1991	Idler Pulley	W/AC		
		Jimmy Compact 4.3L	1988-1991	Idler Pulley	W/AC		
		Jimmy Full Size 5.7L	1989-1991	Idler Pulley	W/AC		
		Syclone 4.3L	1991	Idler Pulley	W/AC		
		S Pickup 4.3L	1988-1990	Idler Pulley	W/AC		
		Safair 4.3L	1987-1989	Idler Pulley	W/AC		
		G Van 5.7L	1988	Idler Pulley	W/AC, VIN K		
		G Van 5.7L	1987	Idler Pulley	W/AC, VIN M		
			<b>Hummer</b>	H1 6.5L Diesel	2002-2003	Tensioner Pulley	
			<b>Lincoln</b>	Continental 4.6L	1995-2002	Idler Pulley	
				Continental 4.6L	1995-2002	Tensioner Pulley	

# GMB Idler Pulley



34

GMB Korea Corporation

Part /no.	Maker	Model & Engine	Yr		
		Type	From ~ To		
GSP 88010	Pontiac	Town Car 4.6L	1991-1999	Idler Pulley	
		Town Car 4.6L	1991-1999	Tensioner Pulley	
		Mark VIII 4.6L	1993-1998	Idler Pulley	
		Mark VIII 4.6L	1993-1998	Tensioner Pulley	
		Mark VII 5.0L	1984-1992	Tensioner Pulley	
		Continental 5.0L	1984-1987	Tensioner Pulley	
		Town Car 5.0L	1984	Tensioner Pulley	
	Mazda	B2300 Pickup 2.3L	2001-2002	Tensioner Pulley	
		B3000 Pickup 3.0L	2002	Idler Pulley	
		B3000 Pickup 3.0L	2001-2002	Tensioner Pulley	
		B2500 Pickup 2.5L	1998-2001	Tensioner Pulley	
		B3000 Pickup 3.0L Flex	2001	Idler Pulley	
		B3000 Pickup 3.0L Flex	1999-2001	Tensioner Pulley	
		B3000 Pickup 3.0L Flex	1999	Idler Pulley	
		B3000 Pickup 3.0L	1998	Tensioner Pulley	
		B2300 Pickup 2.3L	1997	Idler Pulley	
		B2300 Pickup 2.3L	1994-1997	Tensioner Pulley	
		B3000 Pickup 3.0L(Canada)	1997	Idler Pulley	
		B3000 Pickup 3.0L(Canada)	1997	Tensioner Pulley	
		B3000 Pickup 3.0L	1995-1996	Idler Pulley	
		B3000 Pickup 3.0L	1994-1996	Tensioner Pulley	
		Mercury	Sable 3.0L	1996-2003	Tensioner Pulley
	Mountaineer 5.0L		1998-2001	Idler Pulley-Ait Brkt.	
	Sable 3.0L Flex		2001	Tensioner Pulley	
	Mystique 2.5L		1995-2000	Tensioner Pulley	
	Sable 3.0L		1996-2000	Tensioner Pulley	W/DOHC
	Grand Marquis 4.6L		1992-1999	Idler Pulley	
	Grand Marquis 4.6L		1992-1999	Tensioner Pulley	
	Mystique 2.0L		1998	Idler Pulley	2-98 & Older
	Cougar 4.6L		1996-1997	Idler Pulley	
	Cougar 4.6L		1994-1997	Tensioner Pulley	
	Sable 3.0L		1994-1995	Tensioner Pulley	
	Cougar 4.6L		1994	Idler Pulley	
Topaz 2.3L	1994		Tensioner Pulley		
Topaz 3.0L	1994		Tensioner Pulley-AC Drive		
Sable 3.8L	1993		Idler Pulley		
Topaz 3.0L	1992-1993	Tensioner Pulley-Serp Drive			

# Application Guide



Part/ no.	Maker	Model & Engine	Yr		
		Type	From ~ To		
GSP 88010	Mercury	Cougar 3.8L	1992	Tensioner Pulley	
		Topaz 2.3L	1990-1991	Tensioner Pulley	
		Cougar 3.8L	1989-1990	Tensioner Pulley-Smooth	W/O Schgr
		Topaz 2.3L	1989	Tensioner Pulley	W/6-Rib Belt
		Cougar 3.8L	1988	Tensioner Pulley	
		Cougar 5.0L	1983-1988	Tensioner Pulley	
		Topaz 2.3L	1988	Tensioner Pulley-Grooved	
		Capri 5.0L	1984-1986	Tensioner Pulley	
		Sable 2.5L	1986	Tensioner Pulley	
		Colony Park 5.0L	1982-1985	Tensioner Pulley	
		Grand Marquis 5.0L	1982-1985	Tensioner Pulley	
		Marquis 5.0L(Canada)	1985	Tensioner Pulley	
		Capri 5.0L	1983	Tensioner Pulley-Serp Drive	
		Capri 4.2L	1982	Tensioner Pulley	
		Capri 5.0L	1982	Tensioner Pulley	
		Grand Marquis 4.2L	1982	Tensioner Pulley	
		Marquis 4.2L	1982	Tensioner Pulley	
		Marquis 5.0L	1982	Tensioner Pulley	
	Oldsmobile	Alero 3.4L	1999-2003	Idler Pulley	2 Reqd
		Aurora 4.0L	2001-2003	Tensioner Pulley-Serp Drive	
		Bravada 4.2L	2002	Idler Pulley	
		Silhouette 3.4L	1999-2002	Idler Pulley	2 Reqd
		Aurora 4.0L	1998-1999	Tensioner Pulley-Serp Drive	
		Cutlass 3.1L	1997-1999	Idler Pulley	2 Reqd
		Eighty Eight 3.8L	1999	Tensioner Pulley	W/O Schgr
		Eighty Eight 3.8L	1996-1999	Tensioner Pulley	W/Schgr
		Intrigue 3.8L	1999	Tensioner Pulley	
		LSS 3.8L	1999	Tensioner Pulley	W/O Schgr
		LSS 3.8L	1996-1999	Tensioner Pulley	W/Schgr
		Regency 3.8L	1997-1998	Tensioner Pulley	W/Schgr
		Aurora 4.0L	1995-1997	Tensioner Pulley	
		Ninety Eight 3.8L	1996	Tensioner Pulley	W/Schgr
Eighty Eight 3.8L	1995	Idler Pulley-Smooth	W/Schgr		
Eighty Eight 3.8L	1995	Tensioner Pulley	W/Schgr, 2 Reqd		
Ninety Eight 3.8L	1992-1995	Idler Pulley-Smooth	W/Schgr		
Ninety Eight 3.8L	1992-1995	Tensioner Pulley	W/Schgr, 2 Reqd		
Bravada 4.3L	1991-1994	Idler Pulley			



# GMB Idler Pulley



36

GMB Korea Corporation

Part /no.	Maker	Model & Engine	Yr		
		Type	From ~ To		
GSP 88010	Oldsmobile	Custom Cruiser 5.0L	1991-1992	Tensioner Pulley	
		Custom Cruiser 5.7L	1992	Tensioner Pulley	
	Pontiac	Aztek 3.4L	2001-2002	Idler Pulley	2 Reqd
		Bonneville 3.8L	1999-2003	Tensioner Pulley	W/O Schgr
		Bonneville 3.8L	1996-2003	Tensioner Pulley	W/Schgr
		Grand Am 3.4L	1999-2003	Idler Pulley	2 Reqd
		Grand Prix 3.8L	1999-2003	Tensioner Pulley	W/O Schgr
		Grand Prix 3.8L	1997-2003	Tensioner Pulley	W/Schgr
		Montana 3.4L	1999-2002	Idler Pulley	2 Reqd
		Firebird 3.8L	1997-2002	Idler Pulley	
		Firebird 3.8L	1998-2002	Tensioner Pulley	
		Firebird Formula 5.7L	1998-1999	Idler Pulley	
		Firebird Trans AM 5.7L	1998-1999	Idler Pulley	
		Trans Sport 3.4L(Canada)	1999	Idler Pulley	2 Reqd
		Firebird 3.8L	1996	Idler Pulley-Smooth	
		Bonneville 3.8L	1992-1995	Idler Pulley-Smooth	W/Schgr
		Bonneville 3.8L	1992-1995	Tensioner Pulley	W/Schgr, 2 Reqd
		Firebird 3.8L	1995	Idler Pulley	
		Firebird 5.0L	1988-1992	Tensioner Pulley	
		Firebird Formula 5.0L	1989-1992	Tensioner Pulley	
Firebird Formula 5.7L	1989-1992	Tensioner Pulley			
Firebird Trans AM 5.0L	1988-1992	Tensioner Pulley			
Firebird Trans AM 5.7L	1988-1992	Tensioner Pulley			
Firebird 5.7L	1988	Tensioner Pulley			
	Workhorse	P Chassis 6.5L Diesel	2000-2002	Tensioner Pulley	
GSP 88011	Hyundai	OE # : 25286-3B001		Idler Pulley	W/AC
GSP 88012	Hyundai	OE # : 25286-4A000		Idler Pulley	W/AC
GSP 88013	Chevrolet	C & K Pickup 7.4L	1988-1993	Tensioner Pulley	
		Suburban 7.4L	1989-1993	Tensioner Pulley	
		G Van 7.4L	1988-1991	Tensioner Pulley	
	Ford	E Van 4.6L	1997-2003	Idler Pulley	
		E Van 5.4L	1997-2003	Idler Pulley	
		F Pickup 4.6L	1997-2002	Idler Pulley	
		Super Duty Van 5.4L	1999-2003	Idler Pulley	
		Super Duty Van 6.8L	1997-2003	Idler Pulley	
Excursion 5.4L	2001-2002	Idler Pulley			
Excursion 6.8L	2000-2002	Idler Pulley			

# Application Guide



Part/ no.	Maker	Model & Engine	Yr		
		Type	From ~ To		
GSP 88013	Ford	Excursion 4.6L	1997-2002	Idler Pulley	
		Excursion 5.4L	1997-2002	Idler Pulley	
		Explorer 4.6L	2002	Idler Pulley-Smooth	
		F Pickup 5.4L	1997-2002	Idler Pulley	
		F Pickup 5.4L Bifuel	2002	Idler Pulley	
		Super Duty Pickup 5.4L	1999-2002	Idler Pulley	
		Super Duty Pickup 6.8L	1999-2002	Idler Pulley	
		E Van 5.4L CNG	2000-2001	Idler Pulley	
		Super Duty Pickup 6.8L Bfuel	2001	Idler Pulley	
		Super Duty Van 5.4L CNG	2000-2001	Idler Pulley	
		E Van 6.8L	1997-1998	Idler Pulley	
		Mustang 3.8L	1998	Idler Pulley	8-98 & Older, W/AC
		E Van 7.3L Diesel	1995-1997	Tensioner Pulley	
		F Pickup 7.3L Diesel	1995-1997	Tensioner Pulley	
		Mustang 3.8L	1994-1997	Idler Pulley	W/AC
		Super Duty Pickup 7.3L Diesel	1995-1997	Tensioner Pulley	
		Super Duty Van 7.3L Diesel	1996-1997	Tensioner Pulley	
		E Van 4.9L	1987-1996	Tensioner Pulley	
		F Pickup 4.9L	1987-1996	Tensioner Pulley	
		F Pickup 7.3L Diesel	1994	Tensioner Pulley	W/8-Rib Belt
	Super Duty Pickup 7.3L Diesel	1994	Tensioner Pulley	W/8-Rib Belt	
	Bronco 4.9L	1991-1992	Tensioner Pulley		
	Bronco Full Size 4.9L	1987-1990	Tensioner Pulley		
	GMC	C & K Pickup 7.4L	1988-1993	Tensioner Pulley	
		Suburban 7.4L	1988-1993	Tensioner Pulley	
		G Van 7.4L	1988-1991	Tensioner Pulley	
		R & V Pickup 7.4L	1988	Tensioner Pulley	
	Lincoln	Blackwood 5.4L	2002	Idler Pulley	
Navigator 5.4L		1998-2002	Idler Pulley		
Mercury	Mountaineer 4.6L	2002	Idler Pulley-Smooth		
GSP 88014	Ssangyong	OE # : A 661 200 30 70	Idler Pulley	W/AC	
GSP 88015	Hyundai	OE # : 57212-38000	Idler Pulley	W/AC	
GSP 88016	Ssangyong	OE # : A 162 200 30 70	Idler Pulley	W/AC	
GSP 88017	Buick	Park Ave. 3.8L	1996-2003	Idler Pulley-Smooth	W/Schgr
		Regal 3.8L	1997-2003	Idler Pulley-Smooth	W/Schgr
		Riviera 3.8L	1998-1999	Idler Pulley-Smooth	W/Schgr
		Century 3.1L	1994-1997	Tensioner Pulley	

# GMB Idler Pulley



38

GMB Korea Corporation

Part / no.	Maker	Model & Engine	Yr		
		Type	From ~ To		
GSP 88017	Buick	Skylark 3.1L	1994-1997	Tensioner Pulley	
		Regal 3.1L	1989-1996	Tensioner Pulley	
		Century 2.8L	1987-1989	Tensioner Pulley	
		Regal 2.8L	1988-1989	Tensioner Pulley	
		Century Estate Wagon 2.8L	1987-1988	Tensioner Pulley	
	Cadillac	Deville 4.9L	1994-1995	Idler Pulley	
		Deville 4.9L	1993-1995	Tensioner Pulley	
		Eldorado 4.9L	1993	Tensioner Pulley	
		Seville 4.9L	1993	Tensioner Pulley	
		Sixty Special 4.9L	1993	Tensioner Pulley	
		Allante 4.5L	1990-1992	Tensioner Pulley	
		Deville 4.9L	1991	Tensioner Pulley	
		Eldorado 4.9L	1991	Tensioner Pulley	
		Fleetwood 4.9L	1991	Tensioner Pulley	
		Fleetwood Sixty Special 4.9L	1991	Tensioner Pulley	
		Seville 4.9L	1991	Tensioner Pulley	
		Deville 4.5L	1990	Tensioner Pulley	
		Eldorado 4.5L	1990	Tensioner Pulley	
		Fleetwood 4.5L	1990	Tensioner Pulley	
		Fleetwood Sixty Special 4.5L	1990	Tensioner Pulley	
	Seville 4.5L	1990	Tensioner Pulley		
	Cimarron 2.8L	1987-1988	Tensioner Pulley		
	Chevrolet	Lumina 3.1L	1990-1997	Tensioner Pulley	
		Monte Carlo 3.1L	1995-1997	Tensioner Pulley	
		Venture 3.4L	1997	Tensioner Pulley	
		Beretta 3.1L	1990-1996	Tensioner Pulley	
		Corsica 3.1L	1990-1996	Tensioner Pulley	
		Lumina APV 3.4L	1996	Tensioner Pulley	
		Lumina APV 3.1L	1990-1995	Tensioner Pulley	
		Cavalier 3.1L	1990-1994	Tensioner Pulley	
Astro 4.3L		1993	Idler Pulley	W/O HD Htr	
Astro 4.3L		1990-1991	Idler Pulley	W/O AC, W/O HD Htr	
G Van 7.4L		1990-1991	Idler Pulley	W/AC	
Celebrity 3.1L		1990	Tensioner Pulley		
Beretta 2.8L		1987-1989	Tensioner Pulley		
Cavalier 2.8L		1987-1989	Tensioner Pulley		
Celebrity 2.8L		1987-1989	Tensioner Pulley		

# Application Guide



Part/ no.	Maker	Model & Engine	Yr		
		Type	From ~ To		
GSP 88017	Chevrolet	Corsica 2.8L	1987-1989	Tensioner Pulley	
		G Van 7.4L	1988	Idler Pulley	W/AC
	Ford	E Van 4.2L	1997-2003	Tensioner Pulley	
		F Pickup 4.2L	1997-2003	Tensioner Pulley	
		Super Duty Van 4.2L	2001	Tensioner Pulley	
		F Pickup 5.8L	1992-1997	Idler Pulley	W/60A Alt
		Bronco 5.0L	1993-1996	Idler Pulley	W/60A Alt
		Bronco 5.8L	1992-1996	Idler Pulley	W/60A Alt
		E Van 5.0L	1993-1996	Idler Pulley	W/60A Alt
		E Van 5.8L	1992-1996	Idler Pulley	W/60A Alt
		Explorer 5.0L	1996	Idler Pulley	
		F Pickup 5.0L	1993-1996	Idler Pulley	W/60A Alt
		Thunderbird 3.8L	1989-1995	Idler Pulley	W/O Schgr
		Bronco 5.0L	1992	Idler Pulley	W/60A Alt
		Bronco 5.0L	1991-1992	Tensioner Pulley	
		Bronco 5.8L	1991-1992	Tensioner Pulley	
		E Van 5.0L	1992	Idler Pulley	W/60A Alt
		E Van 5.0L	1987-1992	Tensioner Pulley	
		E Van 5.8L	1987-1992	Tensioner Pulley	
		F Pickup 5.0L	1992	Idler Pulley	W/60A Alt
		F Pickup 5.0L	1987-1992	Tensioner Pulley	
		F Pickup 5.8L	1988-1992	Tensioner Pulley	
		Thunderbird 5.0L	1992	Idler Pulley	
		Bronco 5.0L	1991	Idler Pulley	W/60A Alt
		Bronco 5.8L	1991	Idler Pulley	W/60A Alt
		E Van 5.0L	1991	Idler Pulley	W/60A Alt
		E Van 5.8L	1991	Idler Pulley	W/60A Alt
		F Pickup 5.0L	1991	Idler Pulley	W/60A Alt
		F Pickup 5.8L	1991	Idler Pulley	W/60A Alt
		Bronco Full Size 5.0L	1990	Idler Pulley	W/60A Alt
	Bronco Full Size 5.0L	1987-1990	Tensioner Pulley		
	Bronco Full Size 5.8L	1990	Idler Pulley	W/60A Alt	
	Bronco Full Size 5.8L	1988-1990	Tensioner Pulley		
	E Van 5.0L	1990	Idler Pulley	W/60A Alt	
	E Van 5.8L	1990	Idler Pulley	W/60A Alt	
	F Pickup 5.0L	1990	Idler Pulley	W/60A Alt	
	F Pickup 5.8L	1990	Idler Pulley	W/60A Alt	

# GMB Idler Pulley



40

GMB Korea Corporation

Part /no.	Maker	Model & Engine	Yr		
		Type	From ~ To		
GSP 88017	<b>Ford</b>	Taurus 3.8L	1989-1990	Idler Pulley	
	<b>GMC</b>	Safari 4.3L	1993	Idler Pulley	W/O HD Htr
		Typhoon 4.3L	1992-1993	Idler Pulley	W/Turbo
		Syclone 4.3L	1991-1992	Idler Pulley	W/Turbo
		G Van 7.4L	1990-1991	Idler Pulley	W/AC
		Safari 4.3L	1990-1991	Idler Pulley	W/O AC, W/O HD Htr
		G Van 7.4L	1988	Idler Pulley	W/AC
	<b>Lincoln</b>	Continental 3.8L	1989	Idler Pulley	
	<b>Mercury</b>	Cougar 3.8L	1992-1993	Idler Pulley	
		Cougar 3.8L	1991	Idler Pulley	W/O AC
		Cougar 3.8L	1989-1990	Idler Pulley	W/O Schgr
		Sable 3.8L	1989-1990	Idler Pulley	
		Topaz 2.3L	1988	Tensioner Pulley-Smooth	
	<b>Oldsmobile</b>	Eighty Eight 3.8L	1996-1999	Idler Pulley-Smooth	W/Schgr
		LSS 3.8L	1996-1999	Idler Pulley-Smooth	W/Schgr
		Regency 3.8L	1997-1998	Idler Pulley-Smooth	W/Schgr
		Achieva 3.1L	1994-1997	Tensioner Pulley	
		Cutlass Supreme 3.1L	1989-1997	Tensioner Pulley	
		Silhouette 3.4L	1996-1997	Tensioner Pulley	
		Ciera 3.1L	1996	Tensioner Pulley	
		Ninety Eight 3.8L	1996	Idler Pulley-Smooth	W/Schgr
		Cutlass Ciera 3.1L	1994-1995	Tensioner Pulley	
		Cutlass Cruiser 3.1L	1994-1995	Tensioner Pulley	
		Silhouette 3.1L	1990-1994	Tensioner Pulley	
		Cutlass Ciera 2.8L	1987-1989	Tensioner Pulley	
		Cutlass Cruiser 2.8L	1987-1989	Tensioner Pulley	
		Cutlass Supreme 2.8L	1988-1989	Tensioner Pulley	
		Firenza 2.8L	1987	Tensioner Pulley	
	<b>Pontiac</b>	Bonneville 3.8L	1996-2003	Idler Pulley-Smooth	W/Schgr
		Grand Prix 3.8L	1997-2003	Idler Pulley-Smooth	W/Schgr
		Grand Am 3.1L	1994-1997	Tensioner Pulley	
		Grand Prix 3.1L	1989-1997	Tensioner Pulley	
Trans Sport 3.4L		1996-1997	Tensioner Pulley		
Trans Sport 3.1L		1990-1995	Tensioner Pulley		
Sunbird 3.1L		1991-1994	Tensioner Pulley		
Tempest 3.1L(Canada)		1990-1991	Tensioner Pulley		
6000 3.1L	1989-1991	Tensioner Pulley			



# Application Guide



Part/ no.	Maker	Model & Engine	Yr		
		Type	From ~ To		
GSP 88017	Pontiac	Grand Prix 2.8L	1988-1989	Tensioner Pulley	
		Tempest 2.8L(Canada)	1987-1989	Tensioner Pulley	
		6000 2.8L	1987-1989	Tensioner Pulley	
GSP 88018	Chevrolet	Trailblazer 4.2L	2002	Tensioner Pulley	
		Prizm 1.8L	1998-2002	Tensioner Pulley	
	Ford	Escape 2.0L	2001-2003	Idler Pulley	
		Cougar 2.5L(Canada)-	2000-2002	Idler Pulley	
		Focus 2.0L	2000-2002	Idler Pulley	W/DOHC
		Contour 2.0L	1999-2000	Idler Pulley	
		Contour 2.0L Bfuel	2000	Idler Pulley	
		Contour 2.0L(Canada)	2000	Idler Pulley	
		Contour 2.0L	1998	Idler Pulley	3-98 & Newer
	GMC	Envoy 4.2L	2002-2003	Tensioner Pulley	
	Jeep	Grand Cherokee 4.0L	1999-2003	Tensioner Pulley	
		TJ 4.0L(Canada)-	2000-2003	Tensioner Pulley	
		Wrangler 4.0L	2000-2003	Tensioner Pulley	
	Mazda	Tribute 2.0L	2001-2002	Idler Pulley	
	Mercury	Cougar 2.5L	2000-2002	Idler Pulley	
		Cougar 2.0L	1999-2001	Idler Pulley	
		Mystique 2.0L	1999-2000	Idler Pulley	
		Mystique 2.0L	1998	Idler Pulley	3-98 & Newer
	Oldsmobile	Bravada 4.2L	2002	Tensioner Pulley	
	Pontiac	Vibe 1.8L	2003	Tensioner Pulley	
	Toyota	Celica 1.8L	2001-2002	Tensioner Pulley	GT
Corolla 1.8L		1998-2002	Tensioner Pulley		
MR2 Spyder 1.8L		2001-2002	Tensioner Pulley		
VW	Beetle 1.8L	1999-2001	Tensioner Pulley		
	Beetle 2.0L	1998-2001	Tensioner Pulley		
	Golf 1.8L	2000-2001	Tensioner Pulley		
GSP 88019	Buick	Lesabre 3.8L	1989-1995	Tensioner Pulley	
		Regal 3.8L	1990-1995	Tensioner Pulley	
		Century 3.3L	1989-1993	Tensioner Pulley	
		Park Ave. 3.8L	1991-1993	Tensioner Pulley	W/O Schgr
		Riviera 3.8L	1988-1993	Tensioner Pulley	
		Skylark 3.3L	1989-1993	Tensioner Pulley	
		Reatta 3.8L	1988-1991	Tensioner Pulley	
		Electra 3.8L	1988-1990	Tensioner Pulley	

# GMB Idler Pulley



42

GMB Korea Corporation

Part /no.	Maker	Model & Engine	Yr		
		Type	From ~ To		
GSP 88019	Buick	Electra Park Ave. 3.8L	1988-1990	Tensioner Pulley	
		Century Estate Wagon 3.3L	1989	Tensioner Pulley	
		Lesabre 3.8L	1988	Idler Pulley	
	Chevrolet	Lumina 3.4L	1991-1997	Tensioner Pulley	
		Monte Carlo 3.4L	1995-1997	Tensioner Pulley	
		Lumina APV 3.8L	1992-1995	Tensioner Pulley	
	Hyundai	Santa Fe 2.7L	2001-2003	Idler Pulley	
		Santa Fe 2.7L	2001-2003	Tensioner Pulley	
		Sonata 2.7L	2002-2003	Idler Pulley	
		Sonata 2.7L	2002-2003	Tensioner Pulley	
		Tiburon 2.7L	2003	Idler Pulley	
		Tiburon 2.7L	2003	Tensioner Pulley	
		Sonata 2.5L	1999-2001	Idler Pulley	
		Sonata 2.5L	1999-2001	Tensioner Pulley	
	Kia	Optima 2.7L	2002	Idler Pulley	
		Optima 2.7L	2002	Tensioner Pulley	
		Magentis 2.5L (Canada)	2001	Idler Pulley	
		Magentis 2.5L (Canada)	2001	Tensioner Pulley	
		Optima 2.5L	2001	Idler Pulley	
		Optima 2.5L	2001	Tensioner Pulley	
	Oldsmobile	Cutlass Supreme 3.4L	1991-1996	Tensioner Pulley	
		Silhouette 3.8L	1992-1995	Tensioner Pulley	
		Eighty Eight 3.8L	1989-1994	Tensioner Pulley	
		Achieva 3.3L	1992-1993	Tensioner Pulley	
		Cutlass Ciera 3.3L	1989-1993	Tensioner Pulley	
		Cutlass Cruiser 3.3L	1989-1993	Tensioner Pulley	
		Ninety Eight 3.8L	1992-1993	Tensioner Pulley	W/O Schgr
		Toronado 3.8L	1988-1992	Tensioner Pulley	
Toronado Trofeo 3.8L		1988-1992	Tensioner Pulley		
Cutlass Calais 3.3L		1989-1991	Tensioner Pulley		
Ninety Eight 3.8L		1988-1991	Tensioner Pulley		
Delta 88 3.8L		1988	Tensioner Pulley		
Pontiac	Grand Prix 3.4L	1991-1996	Tensioner Pulley		
	Trans Sport 3.8L	1992-1995	Tensioner Pulley		
	Bonneville 3.8L	1992-1993	Tensioner Pulley	W/O Schgr	
	Grand Am 3.3L	1992-1993	Tensioner Pulley		
	Bonneville 3.8L	1989-1991	Tensioner Pulley		

# Application Guide



Part/ no.	Maker	Model & Engine	Yr			
		Type	From ~ To			
GSP 88020	Ford	Super Duty Pickup 7.3L Diesel	1999-2003	Tensioner Pulley-Smooth		
		E Van 5.4L	2000-2002	Tensioner Pulley		
		Excursion 5.4L	2000-2002	Tensioner Pulley-Smooth		
		Excursion 7.3L Diesel	2000-2002	Tensioner Pulley-Smooth		
		Excursion 6.8L	2000-2002	Tensioner Pulley-Smooth		
		Expedition 4.6L	1998-2002	Tensioner Pulley-Smooth		
		Expedition 5.4L	2001-2002	Tensioner Pulley-Smooth		
		F Pickup 4.6L	1998-2002	Tensioner Pulley-Smooth		
		F Pickup 5.4L	1998-2002	Tensioner Pulley-Smooth		
		F Pickup 5.4L Bifuel	2002	Tensioner Pulley-Smooth		
		Super Duty Pickup 5.4L	1999-2002	Tensioner Pulley-Smooth		
		Super Duty Pickup 6.8L	1999-2002	Tensioner Pulley-Smooth		
		Super Duty Van 5.4L	2002	Tensioner Pulley		
		Super Duty Van 7.3L Diesel	1998-2002	Tensioner Pulley-Smooth		
		E Van 4.6L	1999-2001	Tensioner Pulley-Smooth		
		E Van 5.4L CNG	2000-2001	Tensioner Pulley		
		Super Duty Pickup 6.8L Bifuel	2001	Tensioner Pulley-Smooth		
		Super Duty Van 5.4L	1999-2001	Tensioner Pulley-Smooth		
		Super Duty Van 5.4L CNG	2001	Tensioner Pulley-Smooth		
		Super Duty Van 6.8L	1998-2001	Tensioner Pulley-Smooth		
		Expedition 5.4L	2000	Tensioner Pulley		
		E Van 5.4L	1998-1999	Tensioner Pulley-Smooth		
		Expedition 5.4L	1998-1999	Tensioner Pulley-Smooth		
		E Van 4.6L	1998	Tensioner Pulley		
		E Van 6.8L	1998	Tensioner Pulley-Smooth		
		E Van 4.6L	1997	Tensioner Pulley-Smooth		
		E Van 5.4L	1997	Tensioner Pulley		
		E Van 6.8L	1997	Tensioner Pulley		
		Expedition 4.6L	1997	Tensioner Pulley		
		Expedition 5.4L	1997	Tensioner Pulley		
		F Pickup 4.6L	1997	Tensioner Pulley		
		F Pickup 5.4L	1997	Tensioner Pulley		
		Super Duty Van 6.8L	1997	Tensioner Pulley		
		Taurus 3.8L	1991-1995	Idler Pulley		
		Thunderbird 3.8L	1989-1995	Tensioner Pulley	W/Schgr	
		Windstar 3.8L	1995	Idler Pulley		
		Lincoln	Blackwood 5.4L	2002	Tensioner Pulley-Smooth	

# GMB Idler Pulley



Part /no.	Maker	Model & Engine	Yr		
		Type	From ~ To		
GSP 88020	Lincoln	Navigator 5.4L	1998-2001	Tensioner Pulley	
		Continental 3.8L	1990-1994	Idler Pulley	
	Mercury	Sable 3.8L	1994-1995	Idler Pulley	
		Sable 3.0L	1993	Tensioner Pulley	
		Sable 3.8L	1991-1992	Idler Pulley	
Cougar 3.8L	1989-1990	Tensioner Pulley	W/Schgr		
GSP 88021	Hyundai	Avante XD : 97834-29010		Idler Pulley	
		Avante (DOHC) : 23129-22060		Idler Pulley	
	Kia	Cerato : 97834-2D520		Idler Pulley	
		Sportage : 23129-2D520		Idler Pulley	
New Pride : 23129-2D530		Idler Pulley			
GSP 88022	Hyundai	Avante : 23129-29700		Idler Pulley	
		EF Sonata(LPG) : 23129-29700		Idler Pulley	
	Kia	Optima(LPG) : 23129-29700		Idler Pulley	
		Carens : 23129-29700		Idler Pulley	
Carnival : 23129-29700		Idler Pulley			
GSP 88023	Hyundai	Accent : 97706-22061		Idler Pulley	
		Accent : 97834-22200		Idler Pulley	
GSP 89001	Hyundai	OE # : 57250-37320, 57250-37330		Idler Pulley	
GSP 89002	Hyundai	OE # : 57177-H1300		Idler Pulley	
GSP 89003	Acura	Legend 2.7L	1987~1990	Idler Pulley-AC Belt Drive	
		Legend 2.5L	1986~1987	Idler Pulley-AC Belt Drive	
	Chevrolet	Sprint 1.0L (Canada)	1989~1991	Idler Pulley	W/A.C
		GEO	Metro 1.0L	1989~1997	Idler Pulley
	Prizm 1.6L		1993~1997	Idler Pulley	W/A.C
	Prizm 1.8L		1993~1997	Idler Pulley	W/A.C
	Metro 1.3L (Canada)		1992~1994	Idler Pulley	W/A.C
	Prizm 1.6L		1990~1992	Idler Pulley	W/A.C.;Exc GSI
	Prizm 1.6L		1989	Idler Pulley	W/A.C
	Mazda	929 3.0L	1995	Idler Pulley	
	Pontiac	Firefly 1.0L (Canada)	1989~1991	Idler Pulley	
	Toyota	OE # : 88440-17010		Idler Pulley	
		Corolla 1.6L	1992~1997	Idler Pulley-AC Belt Drive	
Corolla 1.8L		1993~1997	Idler Pulley-AC Belt Drive		
Celica 1.8L		1994~1997	Idler Pulley-AC Belt Drive		
MR2 2.2L		1991~1995	Idler Pulley-AC Belt Drive		
MR2 2.0L	1991~1994	Idler Pulley-AC Belt Drive			

# Application Guide



Part/ no.	Maker	Model & Engine	Yr		
		Type	From ~ To		
GSP 89003	Toyota	Celica 1.6L	1990~1993	Idler Pulley-AC Belt Drive	
		Supra 3.0L	1986~1993	Idler Pulley-AC Belt Drive	
		Corolla 1.6L	1991	Idler Pulley-AC Belt Drive	Eng.Designation 4AFE
		MR2 1.6L	1990	Idler Pulley-AC Belt Drive	W/O Schgr
		MR2 1.6L	1985~1987	Idler Pulley-AC Belt Drive	
		Tacoma 2.4L	1995~2002	Idler Pulley	
		Tacoma 2.7L	1995~2001	Idler Pulley	
		Tacoma 3.4L	1995~2001	Idler Pulley	
		Tundra 3.4L	2000~2001	Idler Pulley	
		4 Runner 3.4L	1996~2001	Idler Pulley	
		4 Runner 2.7L	1996~2000	Idler Pulley	
		T100 2.7L	1994~1998	Idler Pulley	
		T100 3.4L	1995~1998	Idler Pulley	
		Previa 2.4L	1994~1997	Idler Pulley	
GSP 89004	Mitsubishi	OE # :MD310150		Idler Pulley	
GSP 89005	Nissan	OE # : E366-15-940		Idler Pulley	
GSP 89006	Toyota	OE # : 88440-16050		Idler Pulley	
GSP 89007	Toyota	OE # : 88440-12170		Idler Pulley	
GSP 89008	Hyundai	OE # : 57216-38000		Idler Pulley	
GSP 89009	Acura	Integra 1.8L	1990-1999	Idler Pulley-AC Drive	
		Integra 1.7L	1992-1993	Idler Pulley-AC Drive	
	Honda	CR-V 2.0L	1997-2001	Idler Pulley-AC Drive	
		Civic 1.6L	1996-1999	Idler Pulley-AC Drive	
		Civic 1.6L CNG	1998-1999	Idler Pulley-AC Drive	
		Civic Del Sol 1.6L	1993-1997	Idler Pulley-AC Drive	
		Civic 1.5L	1988-1995	Idler Pulley-AC Drive	
		Civic Del Sol 1.5L	1993-1995	Idler Pulley-AC Drive	
		Civic 1.6L	1993	Idler Pulley-AC Drive	
		Civic 1.6L	1989-1991	Idler Pulley-AC Drive	
		CRX 1.5L	1988-1991	Idler Pulley-AC Drive	
		Accord 2.0L	1988-1989	Idler Pulley-AC Drive	
		Accord 2.0L	1986-1987	Idler Pulley-AC Drive	W/V-Rib Belt
		Accord 1.6L(Canada)	1985	Idler Pulley	Exc SE
		Accord 1.8L	1985	Idler Pulley	Exc SE
	Subaru	Forester 2.5L	1998-2000	Idler Pulley-AC Drive	
		Impreza 2.2L	1997-2000	Idler Pulley-AC Drive	
Impreza 2.5L		1998-2000	Idler Pulley-AC Drive		

# GMB Idler Pulley



46

GMB Korea Corporation

Part /no.	Maker	Model & Engine	Yr		
		Type	From ~ To		
GSP 89009	Subaru	Legacy 2.5L	1996-2000	Idler Pulley-AC Drive	
		Outback 2.2L	2000	Idler Pulley-AC Drive	
		Outback 2.5L	2000	Idler Pulley-AC Drive	
		Legacy 2.2L	1994-1999	Idler Pulley-AC Drive	
		Impreza 1.8L	1997	Idler Pulley-AC Drive	
GSP 89010	Acura	SLX 3.5L	1998-1999	Idler Pulley	
	Cadillac	Escalade 5.7L	1999-2000	Tensioner Pulley	
		Astro 4.3L	1996-2002	Idler Pulley-Grooved	W/O AC
	Chevrolet	Astro 4.3L	1996-2002	Tensioner Pulley	
		Blazer 4.3L	1996-2002	Idler Pulley-Grooved	W/O AC
		Blazer 4.3L	1996-2002	Tensioner Pulley	
		Corvette 5.7L	1997-2003	Tensioner Pulley	
		Express 4.3L	1996-2002	Idler Pulley-Grooved	W/O AC
		Express 4.3L	1996-2002	Tensioner Pulley	
		S Pickup 4.3L	1996-2002	Idler Pulley-Grooved	W/O AC
		S Pickup 4.3L	1996-2002	Tensioner Pulley	
		C & K Pickup 8.1L	2001-2002	Idler Pulley-Grooved	W/O AC
		Camaro Z28 5.7L	1998-2002	Tensioner Pulley	
		Express 5.0L	1996-2002	Idler Pulley-Grooved	W/O AC
		Express 5.0L	1996-2002	Tensioner Pulley	
		Express 5.7L	1996-2002	Idler Pulley-Grooved	W/O AC
		Express 5.7L	1996-2002	Tensioner Pulley	
		Express 8.1L	2001-2002	Idler Pulley-Grooved	W/O AC
		Silverado Pickup 4.3L	1999-2002	Idler Pulley-Grooved	W/O AC
		Silverado Pickup 4.3L	1999-2002	Tensioner Pulley	
		Silverado Pickup 6.6L Diesel	2002	Tensioner Pulley	
		Silverado Pickup 6.6L Diesel	2001	Idler Pulley	
		C & K Pickup 5.7L	1996-2000	Idler Pulley-Grooved	W/O AC
		C & K Pickup 5.7L	1996-2000	Tensioner Pulley	
		C & K Pickup 7.4L	1996-2000	Idler Pulley-Grooved	W/O AC
		C & K Pickup 7.4L	1996-2000	Tensioner Pulley	
		Express 7.4L	1996-2000	Idler Pulley-Grooved	W/O AC
		Express 7.4L	1999-2000	Tensioner Pulley	
		Tahoe 5.7L	1996-2000	Idler Pulley-Grooved	W/O AC
		Tahoe 5.7L	1996-2000	Tensioner Pulley	
C & K Pickup 5.0L		1996-1999	Idler Pulley-Grooved	W/O AC	
C & K Pickup 5.0L	1996-1999	Tensioner Pulley			



# Application Guide



Part/ no.	Maker	Model & Engine	Yr		
		Type	From ~ To		
GSP 89010	Chevrolet	P Van 4.3L	1996-1999	Idler Pulley-Grooved	W/O AC
		P Van 4.3L	1996-1999	Tensioner Pulley	
		P Van 5.7L	1996-1999	Idler Pulley-Grooved	W/O AC
		P Van 5.7L	1996-1999	Tensioner Pulley	
		P Van 7.4L	1996-1999	Idler Pulley-Grooved	W/O AC
		P Van 7.4L	1996-1999	Tensioner Pulley	
		Suburban 5.7L	1996-1999	Idler Pulley-Grooved	W/O AC
		Suburban 5.7L	1996-1999	Tensioner Pulley	
		Suburban 7.4L	1996-1999	Idler Pulley-Grooved	W/O AC
		Suburban 7.4L	1996-1999	Tensioner Pulley	
		C & K Pickup 4.3L	1996-1998	Idler Pulley-Grooved	W/O AC
		C & K Pickup 4.3L	1996-1998	Tensioner Pulley	
		Express 7.4L	1997-1998	Tensioner Pulley	W/O AP
		G Van 4.3L	1996-1998	Idler Pulley-Grooved	W/O AC
		G Van 4.3L	1998	Tensioner Pulley	
		G Van 5.0L	1996-1998	Idler Pulley-Grooved	W/O AC
		G Van 5.0L	1996-1998	Tensioner Pulley	
		G Van 5.7L	1996-1998	Idler Pulley-Grooved	W/O AC
		G Van 5.7L	1997-1998	Tensioner Pulley	
		G Van 7.4L	1996-1998	Idler Pulley-Grooved	W/O AC
	G Van 7.4L	1998	Tensioner Pulley	W/O AP	
	G Van 4.3L	1996-1997	Tensioner Pulley	W/AC	
	G Van 7.4L	1997	Tensioner Pulley		
	P Van 7.4L	1996-1997	Tensioner Pulley	Exc Mtr Home	
	Express 7.4L	1996	Tensioner Pulley		
	Ford	Escape 2.0L	2001-2003	Tensioner Pulley	
		Explorer 4.0L	1993-2003	Tensioner Pulley	
		Windstar 3.8L	1999-2003	Tensioner Pulley	
		Ranger 4.0L	1994-2002	Tensioner Pulley	
		Cougar 2.0(Canada)	2000	Tensioner Pulley	
Aerostar 4.0L		1996-1997	Tensioner Pulley		
GMC	Safari 4.3L	1996-2002	Idler Pulley-Grooved	W/O AC	
	Safari 4.3L	1996-2002	Tensioner Pulley		
	Savana 4.3L	1996-2002	Idler Pulley-Grooved	W/O AC	
	Savana 4.3L	1996-2002	Tensioner Pulley		
	Sonoma 4.3L	1996-2002	Idler Pulley-Grooved	W/O AC	
	Sonoma 4.3L	1996-2002	Tensioner Pulley		

# GMB Idler Pulley



48

GMB Korea corporation

Part /no.	Maker	Model & Engine	Yr		
		Type	From ~ To		
GSP 89010	GMC	C & K Pickup 8.1L	2001-2002	Idler Pulley-Grooved	W/O AC
		Jimmy 4.3L(Canada)	2002	Idler Pulley-Grooved	W/O AC
		Jimmy 4.3L(Canada)	2002	Tensioner Pulley	
		Savana 5.0L	1996-2002	Idler Pulley-Grooved	W/O AC
		Savana 5.0L	1996-2002	Tensioner Pulley	
		Savana 5.7L	1996-2002	Idler Pulley-Grooved	W/O AC
		Savana 5.7L	1996-2002	Tensioner Pulley	
		Savana 8.1L	2001-2002	Idler Pulley-Grooved	W/O AC
		Sierra Pickup 4.3L	1999-2002	Idler Pulley-Grooved	W/O AC
		Sierra Pickup 4.3L	1999-2002	Tensioner Pulley	
		Sierra Pickup 6.6L Diesel	2002	Tensioner Pulley	
		Jimmy 4.3L	1996-2001	Idler Pulley-Grooved	W/O AC
		Jimmy 4.3L	1996-2001	Tensioner Pulley	
		Sierra Pickup 6.6L Diesel	2001	Idler Pulley	
		C & K Pickup 5.7L	1996-2000	Idler Pulley-Grooved	W/O AC
		C & K Pickup 5.7L	1996-2000	Tensioner Pulley	
		C & K Pickup 7.4L	1996-2000	Idler Pulley-Grooved	W/O AC
		C & K Pickup 7.4L	1996-2000	Tensioner Pulley	
		Envoy 4.3L	1998-2000	Idler Pulley-Grooved	W/O AC
		Envoy 4.3L	1998-2000	Tensioner Pulley	
		Savana 7.4L	1996-2000	Idler Pulley-Grooved	W/O AC
		Savana 7.4L	1999-2000	Tensioner Pulley	
		Yukon 5.7L	1996-2000	Idler Pulley-Grooved	W/O AC
		Yukon 5.7L	1996-2000	Tensioner Pulley	
		C & K Pickup 5.0L	1996-1999	Idler Pulley-Grooved	W/O AC
		C & K Pickup 5.0L	1996-1999	Tensioner Pulley	
		P Van 4.3L	1996-1999	Idler Pulley-Grooved	W/O AC
		P Van 4.3L	1996-1999	Tensioner Pulley	
		P Van 5.7L	1996-1999	Idler Pulley-Grooved	W/O AC
		P Van 5.7L	1996-1999	Tensioner Pulley	
		P Van 7.4L	1996-1999	Idler Pulley-Grooved	W/O AC
		P Van 7.4L	1998-1999	Tensioner Pulley	
		Suburban 5.7L	1996-1999	Idler Pulley-Grooved	W/O AC
		Suburban 5.7L	1996-1999	Tensioner Pulley	
		Suburban 7.4L	1996-1999	Idler Pulley-Grooved	W/O AC
		Suburban 7.4L	1996-1999	Tensioner Pulley	
		C & K Pickup 4.3L	1996-1998	Idler Pulley-Grooved	W/O AC

# Application Guide



Part/ no.	Maker	Model & Engine	Yr		
		Type	From ~ To		
GSP 89010	GMC	C & K Pickup 4.3L	1996-1998	Tensioner Pulley	
		Savana 7.4L	1997-1998	Tensioner Pulley	W/O AP
		P Van 7.4L	1996-1997	Tensioner Pulley	Exc Mtr Home
		G Van 4.3L	1996	Idler Pulley-Grooved	W/O AC
		G Van 4.3L	1996	Tensioner Pulley	W/AC
		G Van 5.7L	1996	Idler Pulley-Grooved	W/O AC
		G Van 7.4L	1996	Idler Pulley-Grooved	W/O AC
		Savana 7.4L	1996	Tensioner Pulley	
	Honda	Passport 3.2L	1998-2002	Idler Pulley	
	Isuzu	Axiom 3.5L	2002	Idler Pulley	
		Rodeo 3.2L	1998-2002	Idler Pulley	
		Trooper 3.5L	1998-2002	Idler Pulley	
		Vehicross 3.5L	1999-2001	Idler Pulley	
		Hombre 4.3L	2000	Idler Pulley-Serp Drive(Grooved)	
		Hombre 4.3L	1997-2000	Tensioner Pulley	
		Amigo 3.2L	1998-1999	Idler Pulley	
		Hombre 4.3L	1997-1999	Idler Pulley-Grooved	W/O AC
	Mazda	B4000 Pickup 4.0L	1994-2002	Tensioner Pulley	
		Tribute 2.0L	2001-2002	Tensioner Pulley	
		Navajo 4.0L	1993-1994	Tensioner Pulley	
	Mercury	Mountaineer 4.0L	1998-2002	Tensioner Pulley	
		Cougar 2.0L	1999-2001	Tensioner Pulley	
	Oldsmobile	Bravada 4.3L	1998-2001	Idler Pulley-Grooved	W/O AC
		Bravada 4.3L	1996-2001	Tensioner Pulley	
	Pontiac	Firebird Formula 5.7L	1998-2002	Tensioner Pulley	
		Firebird Trans AM 5.7L	1998-2002	Tensioner Pulley	
	Workhorse	P Chassis 4.3L	2002	Idler Pulley-Grooved	W/O AC
		P Chassis 4.3L	2002	Tensioner Pulley	
P Chassis 5.7L		2000-2002	Idler Pulley-Grooved	W/O AC	
P Chassis 5.7L		2000-2002	Tensioner Pulley		
GSP 89011	Buick	Park Ave. 3.8L	1991-2003	Idler Pulley-Grooved	W/Schgr
		Regal 3.8L	1997-2003	Idler Pulley-Grooved	W/Schgr
		Rendezvous 3.4L	2002	Tensioner Pulley	
		Riviera 3.8L	1995-1999	Idler Pulley-Grooved	W/Schgr
		Century 2.8L	1987-1989	Idler Pulley	
		Regal 2.8L	1988-1989	Idler Pulley	
		Century Estate Wagon 2.8L	1987-1988	Idler Pulley	

# GMB Idler Pulley



50

GMB Korea Corporation

Part / no.	Maker	Model & Engine	Yr		
		Type	From ~ To		
GSP 89011	Cadillac	CTS 3.2L	2003	Tensioner Pulley	
		Escalade 5.3L	2002	Tensioner Pulley	
		Escalade 6.0L	2002	Tensioner Pulley	
		Catera 3.0L	1997-2001	Tensioner Pulley	
	Chevrolet	Malibu 3.1L	1997-2003	Tensioner Pulley	
		Venture 3.4L	1999-2003	Tensioner Pulley	
		Avalanche 5.3L	2002	Tensioner Pulley	
		Avalanche 8.1L	2002	Tensioner Pulley	
		Silverado Pickup 4.8L	1999-2002	Tensioner Pulley	
		Silverado Pickup 5.3L	1999-2002	Tensioner Pulley	
		Silverado Pickup 6.0L	1999-2002	Tensioner Pulley	
		Silverado Pickup 8.1L	2001	Tensioner Pulley	
		Suburban 5.3L	2000-2002	Tensioner Pulley	
		Suburban 6.0L	2000-2002	Tensioner Pulley	
		Suburban 8.1L	2001-2002	Tensioner Pulley	
		Tahoe 4.8L	2000-2002	Tensioner Pulley	
		Tahoe 5.3L	2000-2002	Tensioner Pulley	
		Camaro 3.8L	1996	Idler Pulley-Grooved	W/O AC
		G Van 4.3L	1992-1996	Tensioner Pulley	W/O AC
		G Van 5.7L	1992-1996	Tensioner Pulley	W/O AC
		C & K Pickup 7.4L	1994-1995	Tensioner Pulley	W/O AC
		Camaro 3.4L	1994-1995	Idler Pulley	
		Camaro Z28 5.7L	1993-1995	Idler Pulley	
		G Van 5.0L	1992-1995	Tensioner Pulley	W/O AC
		G Van 6.5L Diesel	1994-1995	Idler Pulley-Grooved	
		G Van 7.4L	1994-1995	Idler Pulley-Grooved	W/O AC
		Lumina APV 3.1L	1995	Idler Pulley	W/O AC
		Suburban 7.4L	1994-1995	Tensioner Pulley	W/O AC
		Astro 4.3L	1990-1994	Tensioner Pulley	W/O AC
		Lumina APV 3.1L	1994	Idler Pulley	
		Beretta 3.1L	1990-1993	Idler Pulley	W/O AC
		Camaro 3.4L	1993	Idler Pulley	W/O AC
Cavalier 3.1L	1990-1993	Idler Pulley	W/O AC		
Corsica 3.1L	1990-1993	Idler Pulley	W/O AC		
Corvette 5.7L	1993	Idler Pulley	1st Design		
Lumina 3.1L	1990-1993	Idler Pulley	W/O AC		
Lumina APV 3.1L	1990-1993	Idler Pulley	W/O AC		

# Application Guide



Part/ no.	Maker	Model & Engine	Yr		
		Type	From ~ To		
GSP 89011	Chevrolet	Astro 4.3L	1992	Idler Pulley-Grooved	W/O AC
		Corvette 5.7L	1992	Idler Pulley	
		Beretta 2.8L	1987-1989	Idler Pulley	W/O AC
		Camaro 2.8L	1987-1989	Idler Pulley	
		Cavalier 2.8L	1987-1989	Idler Pulley	W/O AC
		Celebrity 2.8L	1987-1989	Idler Pulley	W/O AC
		Corsica 2.8L	1987-1989	Idler Pulley	W/O AC
	Chrysler	Intrepid 2.7L(Canada)	1998-2003	Tensioner Pulley-AC Drive	
		Concorde 2.7L	1998-2002	Tensioner Pulley-AC Drive	
	Dodge	Dakota 4.7L	2000-2003	Tensioner Pulley	
		Durango 4.7L	2000-2003	Tensioner Pulley	
		Intrepid 2.7L	1999-2003	Tensioner Pulley-AC Drive	
		Ram Pickup 3.7L	2002-2003	Tensioner Pulley	
		Ram Pickup 4.7L	2002-2003	Tensioner Pulley	
		Intrepid 2.7L	1998	Idler Pulley-AC Drive	
		Ford	Mustang 3.8L	1994-2003	Tensioner Pulley
	Windstar 3.0L		1996-1998	Tensioner Pulley	
	Windstar 3.8L		1995-1998	Tensioner Pulley	
	F Pickup 4.2L		1997	Idler Pulley	W/O AC
	Ranger 2.3L		1990-1997	Idler Pulley	W/Dir AC
	Thunderbird 3.8L		1996-1997	Tensioner Pulley	
	Taurus 3.8L		1988-1995	Tensioner Pulley	
	Thunderbird 3.8L		1989-1995	Tensioner Pulley-Grooved	W/O Schgr
	GMC	Sierra Pickup 4.8L	1999-2002	Tensioner Pulley	
		Sierra Pickup 5.3L	1999-2002	Tensioner Pulley	
		Sierra Pickup 6.0L	1999-2002	Tensioner Pulley	
		Sierra Pickup 8.1L	2001-2002	Tensioner Pulley	
		Yukon 4.8L	2000-2002	Tensioner Pulley	
		Yukon 5.3L	2000-2002	Tensioner Pulley	
		Yukon 6.0L	2000-2002	Tensioner Pulley	
Yukon 8.1L		2001-2002	Tensioner Pulley		
G Van 4.3L		1992-1996	Tensioner Pulley	W/O AC	
G Van 5.7L		1992-1996	Tensioner Pulley	W/O AC	
C & K Pickup 7.4L		1995	Idler Pulley-Grooved	W/O AC	
G Van 5.0L		1992-1995	Tensioner Pulley	W/O AC	
G Van 6.5L Diesel		1994-1995	Idler Pulley-Grooved		
G Van 7.4L		1994-1995	Idler Pulley-Grooved	W/O AC	

# GMB Idler Pulley



52

GMB Korea Corporation

Part /no.	Maker	Model & Engine	Yr		
		Type	From ~ To		
GSP 89011	GMC	Suburban 7.4L	1995	Idler Pulley-Grooved	W/O AC
		C & K Pickup 7.4L	1994	Tensioner Pulley	W/O AC
		Safari 4.3L	1990-1994	Tensioner Pulley	W/O AC
		Suburban 7.4L	1994	Tensioner Pulley	W/O AC
		Safari 4.3L	1992	Idler Pulley-Grooved	W/O AC
	Hummer	H2 6.0L	2003	Tensioner Pulley	
	Isuzu	Pickup 3.1L	1991-1994	Tensioner Pulley	
		Rodeo 3.1L	1991-1992	Tensioner Pulley	
	Jeep	Grand Cherokee 4.7L	1999-2003	Tensioner Pulley	
		Liberty 3.7L	2002-2003	Tensioner Pulley	
	Lincoln	Continental 3.8L	1988-1994	Tensioner Pulley	
	Mazda	B2300 Pickup 2.3L	1994-1996	Idler Pulley	W/Dir AC
	Mercury	Cougar 3.8L	1993-1997	Tensioner Pulley	
		Sable 3.8L	1988-1995	Tensioner Pulley	
		Cougar 3.8L	1991	Tensioner Pulley	
		Cougar 3.8L	1989-1990	Tensioner Pulley-Grooved	W/O Schgr
	Oldsmobile	Alero 3.4L	1999-2003	Tensioner Pulley	
		Silhouette 3.4L	1999-2002	Tensioner Pulley	
		Aurora 3.5L	2001-2002	Tensioner Pulley	
		Intrigue 3.5L	1999-2002	Tensioner Pulley	
		Cutlass 3.1L	1997-1999	Tensioner Pulley	
		Eighty Eight 3.8L	1995-1999	Idler Pulley-Grooved	W/Schgr
		Intrigue 3.5L	1999	Idler Pulley	
		LSS 3.8L	1996-1999	Idler Pulley-Grooved	W/Schgr
		Regency 3.8L	1997-1998	Idler Pulley-Grooved	W/Schgr
		Ninety Eight 3.8L	1992-1996	Idler Pulley-Grooved	W/Schgr
		Silhouette 3.1L	1990-1994	Idler Pulley	W/O AC
		Cutlass Ciera 2.8L	1987-1989	Idler Pulley	W/O AC
		Cutlass Cruiser 2.8L	1987-1989	Idler Pulley	W/O AC
		Cutlass Supreme 2.8L	1988-1989	Idler Pulley	W/O AC
Pontiac	Firenza 2.8L	1987	Idler Pulley	W/O AC	
	Aztek 3.4L	2001-2002	Tensioner Pulley		
	Bonneville 3.8L	1992-2003	Idler Pulley-Grooved	W/Schgr	
	Grand Am 3.4L	1999-2003	Tensioner Pulley		
	Grand Prix 3.8L	1997-2003	Idler Pulley-Grooved	W/Schgr	
	Montana 3.4L	1999-2002	Tensioner Pulley		
		Trans Sport 3.4L(Canada)	1999	Tensioner Pulley	



# Application Guide



Part/ no.	Maker	Model & Engine	Yr		
		Type	From ~ To		
GSP 89011	Pontiac	Firebird 3.8L	1996	Idler Pulley-Grooved	W/Schgr
		Firebird 3.4L	1994-1995	Idler Pulley	
		Firebird Formula 5.7L	1993-1995	Idler Pulley	
		Firebird Trans AM 5.7L	1993-1995	Idler Pulley	
		Trans Sport 3.1L	1990-1995	Idler Pulley	W/O AC
		Firebird 3.4L	1993	Idler Pulley	W/O AC
		Sunbird 3.1L	1991-1993	Idler Pulley	W/O AC
		Tempest 3.1L(Canada)	1990-1991	Idler Pulley	W/O AC
		Firebird 2.8L	1987-1989	Idler Pulley	
		6000 2.8L	1987-1989	Idler Pulley	W/O AC
		6000 3.1L	1989	Idler Pulley	
		Grand Prix 2.8L	1988	Idler Pulley	W/O AC
		Tempest 2.8L(Canada)	1987-1988	Idler Pulley	W/O AC
		Saturn	L-Series 3.0L	2000-2003	Tensioner Pulley
	VUE 3.0L		2002	Tensioner Pulley	
GSP 89012	Chevrolet	C & K Pickup 7.4L	1988-1993	Idler Pulley	W/O AC
		Suburban 7.4L	1989-1993	Idler Pulley	W/O AC
		G Van 7.4L	1988-1991	Idler Pulley	W/O AC
	Ford	Mustang 2.3L	1987-1993	Tensioner Pulley-PassSide	
		Thunderbird 2.3L	1988	Tensioner Pulley-PassSide	
		Thunderbird 2.3L	1987	Tensioner Pulley-PassSide	
	GMC	C & K Pickup 7.4L	1988-1993	Idler Pulley	W/O AC
		Suburban 7.4L	1989-1993	Idler Pulley	W/O AC
		G Van 7.4L	1988-1991	Idler Pulley	W/O AC
	Jeep	Cherokee 4.0L	1996-2001	Idler Pulley-Grooved	
		TJ 2.5L(Canada)	1997-1998	Idler Pulley-Grooved	W/O PS
		TJ 4.0L(Canada)	1997-1998	Idler Pulley-Grooved	W/O PS
		Wrangler 2.5L	1997-1998	Idler Pulley-Grooved	W/O PS
		Wrangler 4.0	1997-1998	Idler Pulley-Grooved	W/O PS
Cherokee 2.5L		1986-1994	Idler Pulley-Grooved		
Cherokee 4.0L		1987-1994	Idler Pulley-Grooved		
Wrangler 2.5L		1991-1994	Idler Pulley-Grooved		
Wrangler 4.0L		1991-1994	Idler Pulley-Grooved		
YJ 2.5L(Canada)		1991-1994	Idler Pulley-Grooved		
YJ 4.0L(Canada)		1991-1994	Idler Pulley-Grooved		
Comanche 2.5L	1987-1992	Idler Pulley-Grooved			
Comanche 4.0L	1987-1992	Idler Pulley-Grooved			

# GMB Idler Pulley



54

GMB Korea Corporation

Part /no.	Maker	Model & Engine	Yr		
		Type	From ~ To		
	<b>Jeep</b>	Wagoneer 4.0L	1987-1990	Idler Pulley-Grooved	
		Wagoneer 2.5L	1987	Idler Pulley-Grooved	
	<b>Saturn</b>	S-Series 1.9L	1991-2002	Idler Pulley-Grooved	
<b>GSP 89013</b>	<b>Chevrolet</b>	Blazer 4.3L	1995	Idler Pulley	W/O AC
		C & K Pickup 4.3L	1990-1995	Idler Pulley	W/O AC
		C & K Pickup 5.0L	1990-1995	Idler Pulley	W/O AC
		C & K Pickup 5.7L	1990-1995	Idler Pulley	W/O AC
		S Pickup 4.3L	1988-1995	Idler Pulley	W/O AC
		Suburban 5.7L	1990-1995	Idler Pulley	W/O AC
		Tahoe 5.7L	1995	Idler Pulley	W/O AC
		Blazer Compact 4.3L	1988-1994	Idler Pulley	W/O AC
	Blazer Full Size 5.7L	1990-1994	Idler Pulley	W/O AC	
	<b>GMC</b>	C & K Pickup 4.3L	1990-1995	Idler Pulley	W/O AC
		C & K Pickup 5.0L	1990-1995	Idler Pulley	W/O AC
		C & K Pickup 5.7L	1990-1995	Idler Pulley	W/O AC
		Jimmy 4.3L	1992-1995	Idler Pulley	W/O AC
		Sonoma 4.3L	1991-1995	Idler Pulley	W/O AC
		Suburban 5.7L	1990-1995	Idler Pulley	W/O AC
		Yukon 5.7L	1992-1995	Idler Pulley	W/O AC
		Typhoon 4.3L	1993	Idler Pulley	W/O AC
		Syclone 4.3L	1992	Idler Pulley	W/O AC, W/Turbo
		Typhoon 4.3L	1992	Idler Pulley	W/O AC, W/Turbo
		Jimmy Compact 4.3L	1988-1991	Idler Pulley	W/O AC
Jimmy Full Size 5.7L		1990-1991	Idler Pulley	W/O AC	
Syclone 4.3L	1991	Idler Pulley	W/O AC		
S Pickup 4.3L	1988-1990	Idler Pulley	W/O AC		
<b>GSP 89014</b>	<b>Hyundai</b>	OE # : 25285-3B000		Idler Pulley	
<b>GSP 89015</b>	<b>Dodge</b>	Dakota 3.9L	1992-2003	Tensioner Pulley	
		Durango 5.9L	1998-2003	Tensioner Pulley	
		Ram Pickup 5.9L	1994-2003	Tensioner Pulley	
		B Van 3.9L	1992-2003	Tensioner Pulley	
		B Van 5.2L	1992-2003	Tensioner Pulley	
		B Van 5.9L	1993-2003	Tensioner Pulley	
		Dakota 5.9L	1998-2002	Tensioner Pulley	
		Ram Pickup 3.9L	1994-2001	Tensioner Pulley	
		Ram Pickup 5.2L	1994-2001	Tensioner Pulley	
		B Van 5.2L CNG	2000	Tensioner Pulley	

# Application Guide



Part/ no.	Maker	Model & Engine	Yr	
		Type	From ~ To	
GSP 89015	Dodge	Durango 5,2L	1998-2000	Tensioner Pulley
		Dakota 5,2L	1992-1999	Tensioner Pulley
		Durango 3,9L	1998-1999	Tensioner Pulley
		B Van 5,2L CNG	1992-1997	Tensioner Pulley
		Ram Pickup 5,2L CNG	1995-1997	Tensioner Pulley
		D & W Pickup 3,9L	1992-1993	Tensioner Pulley
		D & W Pickup 5,2L	1992-1993	Tensioner Pulley
		D & W Pickup 5,9L	1993	Tensioner Pulley
		Ramcharger 5,2L	1992-1993	Tensioner Pulley
		Ramcharger 5,9L	1993	Tensioner Pulley
	Jeep	Grand Cherokee 5,2L	1993-1998	Tensioner Pulley
		Grand Cherokee 5,9L	1998	Tensioner Pulley
Grand Wagoneer 5,2L		1993	Tensioner Pulley	
GSP 89016	Hyundai	Porto II : 23129-4F100		Idler Pulley
		Terracan : 23129-H1030		Idler Pulley
		Terracan : 23129-H1031		Idler Pulley
	Kia	Sepia : OK201-15-930		Idler Pulley
		Sepia : OK202-15-930		Idler Pulley
		Sepia : OK202-15-940		Idler Pulley
		Rio : OK202-15-940A		Idler Pulley
		Sorento : 23129-H1031		Idler Pulley
		Concord : 23129-H1031		Idler Pulley
		Credos : 23129-H1031		Idler Pulley
Enterprise : 23129-H1031		Idler Pulley		
Potenia(2.0) : 23129-H1031		Idler Pulley		
GSP 89017	Hyundai	Elantra : 23129-28600		Idler Pulley
		Elantra : 23129-28700		Idler Pulley
		Sonata : 97706-34000	1993	Idler Pulley
GSP 98001	Chrysler	Intrepid 3,3L(Canada)	1993-1997	Idler Pulley
		Concorde 3,3L	1993-1996	Idler Pulley
		Concorde 3,3L Flex	1994-1995	Idler Pulley
		Lebaron 3,0L	1990-1995	Idler Pulley-AC Drive
		Lebaron 2,5L	1990-1994	Idler Pulley
		Daytona 2,2L(Canada)	1993	Idler Pulley
		Daytona 2,5L(Canada)	1990-1993	Idler Pulley
		Daytona 3,0L(Canada)	1991-1993	Idler Pulley-AC Drive
Dynasty 2,5L(Canada)	1990-1992	Idler Pulley		

# GMB Idler Pulley



56

GMB Korea Corporation

Part /no.	Maker	Model & Engine	Yr	
		Type	From ~ To	
GSP 98001	Chrysler	TC Maserati 3.0L	1990-1991	Idler Pulley-AC Drive
		Daytona 2.2L(Canada)	1990	Idler Pulley
		Lebaron 2.2L	1990	Idler Pulley
		TC Maserati 2.2L	1990	Idler Pulley
		New Yorker 3.0L	1988-1989	Idler Pulley-AC Drive
		Daytona 2.2L(Canada)	1985-1988	Idler Pulley
		Daytona 2.5L(Canada)	1987-1988	Idler Pulley
		Dynasty 2.5L(Canada)	1988	Idler Pulley
		Lebaron 2.2L	1982-1988	Idler Pulley
		Lebaron 2.5L	1986-1988	Idler Pulley
		New Yorker 2.2L	1983-1988	Idler Pulley
		Town & Country 2.2L	1982-1988	Idler Pulley
		Town & Country 2.5L	1986-1988	Idler Pulley
		New Yorker 2.5L	1986-1987	Idler Pulley
		Exec. Limo. 2.2L(Canada)	1986	Idler Pulley
		Laser 2.2L	1984-1986	Idler Pulley
		Laser 2.5L	1986	Idler Pulley
		Exec. Limo. 2.6L	1985	Idler Pulley
		Lebaron 2.6L	1984-1985	Idler Pulley
		New Yorker 2.6L	1984-1985	Idler Pulley
		Town & Country 2.6L	1984-1985	Idler Pulley
		E Class 2.2L	1983-1984	Idler Pulley
		E Class 2.6L	1984	Idler Pulley
		Executive 2.6L	1984	Idler Pulley
		Laser 2.2L(Canada)	1984	Idler Pulley
		Cordoba 3.7L	1981-1983	Idler Pulley
		Cordoba 3.7L(Canada)	1981-1983	Idler Pulley
		Fifth Ave. 3.7L	1983	Idler Pulley
		Fifth Ave. 3.7L(Canada)	1983	Idler Pulley
		New Yorker 3.7L	1982	Idler Pulley
		New Yorker 3.7L(Canada)	1982	Idler Pulley
		Lebaron 3.7L	1981	Idler Pulley
		Lebaron 3.7L(Canada)	1981	Idler Pulley
	Newport 3.7L	1981	Idler Pulley	
Newport 3.7L(Canada)	1981	Idler Pulley		
Town & Country 3.7L	1981	Idler Pulley		
Dodge		Caravan 3.0L	2000	Idler Pulley-Adjustable

# Application Guide



Part/ no.	Maker	Model & Engine	Yr		
		Type	From ~ To		
GSP 98001	Dodge	Grand Caravan 3.0L	1999-2000	Idler Pulley-Adjustable	
		Caravan 3.0L	1999	Idler Pulley	W/AC, V-Belt
		Caravan 3.0L	1996-1998	Idler Pulley-Adjustable	V-Belt
		Grand Caravan 3.0L	1996-1998	Idler Pulley-Adjustable	V-Belt
		Intrepid 3.3L	1993-1997	Idler Pulley-AC Drive	
		Caravan 2.5L	1990-1995	Tensioner Pulley	W/AC
		Caravan 3.0L	1987-1995	Idler Pulley	W/AC, V-Belt
		Dakota 2.5L	1989-1995	Tensioner Pulley	W/AC
		Grand Caravan 3.0L	1992-1995	Idler Pulley	W/AC, V-Belt
		Intrepid 3.3L Flex	1994-1995	Idler Pulley-AC Drive	
		Spirit 2.5L	1990-1995	Idler Pulley-AC Drive	
		Spirit 3.0L	1989-1995	Idler Pulley-AC Drive	
		Shadow 2.2L	1990-1994	Idler Pulley-AC Drive	
		Shadow 2.5L	1990-1994	Idler Pulley-AC Drive	
		Shadow 3.0L	1992-1994	Idler Pulley-AC Drive	
		Spirit 2.5L Flex	1993-1994	Idler Pulley-AC Drive	
		Daytona 2.5L	1990-1993	Idler Pulley-AC Drive	
		Daytona 3.0L	1990-1993	Idler Pulley-AC Drive	
		Dynasty 2.5L	1990-1993	Idler Pulley-AC Drive	
		Dynasty 3.0L	1991-1993	Idler Pulley-AC Drive	
		Daytona 2.2L	1990	Idler Pulley-AC Drive	
		Omni 2.2L	1990	Idler Pulley-AC Drive	
		D & W Pickup 3.9L	1988-1989	Idler Pulley	
		D & W Pickup 5.2L	1988-1989	Idler Pulley	
		D & W Pickup 5.9L	1988-1989	Idler Pulley	
		Dynasty 3.0L	1989	Idler Pulley-AC Drive	
		Grand Caravan 2.5L	1988-1989	Tensioner Pulley	W/AC
		Grand Caravan 3.0L	1988-1989	Idler Pulley	W/AC, V-Belt
		Ramcharger 5.2L	1988-1989	Idler Pulley	
		Ramcharger 5.9L	1988-1989	Idler Pulley	
		Aries America 2.2L	1988	Idler Pulley-AC Drive	
		Aries America 2.5L	1988	Idler Pulley-AC Drive	
		Caravan 2.5L	1987-1988	Tensioner Pulley	W/AC
		Dakota 2.2L	1987-1988	Idler Pulley	W/AC
Dakota 3.9L	1987-1988	Idler Pulley	W/O PS		
Daytona 2.2L	1984-1988	Idler Pulley-AC Drive			
Daytona 2.5L	1986-1988	Idler Pulley-AC Drive			

# GMB Idler Pulley



58

GMB Korea Corporation

Part /no.	Maker	Model & Engine	Yr		
		Type	From ~ To		
GSP 98001	Dodge	Dynasty 2.5L	1988	Idler Pulley-AC Drive	
		Dynasty 3.0L	1988	Idler Pulley	
		Expo 2.2L(Canada)	1987-1988	Idler Pulley-AC Drive	
		Lancer 2.2L	1985-1988	Idler Pulley-AC Drive	
		Lancer 2.5L	1986-1988	Idler Pulley-AC Drive	
		Mini Ram Van 2.5L	1987-1988	Tensioner Pulley	W/AC
		Mini Ram Van 3.0L	1988	Idler Pulley	W/AC, V-Belt
		Omni 2.2L	1984-1988	Idler Pulley-AC Drive	
		Shadow 2.2L	1987-1988	Idler Pulley-AC Drive	
		Shadow 2.5L	1988	Idler Pulley-AC Drive	
		600 2.2L	1984-1988	Idler Pulley-AC Drive	
		600 2.5L	1986-1988	Idler Pulley-AC Drive	
		Aries 2.2L	1984-1987	Idler Pulley-AC Drive	
		Aries 2.5L	1986-1987	Idler Pulley-AC Drive	
		B Van 3.7L	1985-1987	Idler Pulley	
		B Van 5.2L	1986-1987	Idler Pulley	W/O PS,W/100A At
		B Van 5.9L	1986-1987	Idler Pulley	W/O PS,W/100A At
		Caravan 2.2L	1984-1987	Idler Pulley	W/AC
		Caravan 2.6L	1987	Idler Pulley	
		Charger 2.2L	1984-1987	Idler Pulley-AC Drive	
		D & W Pickup 5.2L	1986-1987	Idler Pulley	W/100A Alt,W/O PS
		D & W Pickup 5.9L	1986-1987	Idler Pulley	W/101A Alt,W/O PS
		Grand Caravan 2.2L	1987	Idler Pulley	W/AC
		Mini Ram Van 2.2L	1984-1987	Idler Pulley	W/AC
		Mini Ram Van 2.6L	1987	Idler Pulley	
		Mini Ram Van 3.0L	1987	Idler Pulley	
		Ramcharger 5.2L	1986-1987	Idler Pulley	W/O PS,W/100A At
		Ramcharger 5.9L	1986-1987	Idler Pulley	W/O PS,W/100A At
		D & W Pickup 3.7L	1985	Idler Pulley	
		Rampage 2.2L	1984	Idler Pulley	W/AC
		Aries 2.2L	1981-1983	Idler Pulley	
		B Van 3.7L	1982-1983	Idler Pulley	
		B Van 5.2L	1981-1983	Idler Pulley	
		B Van 5.9L	1982-1983	Idler Pulley	W/O PS,W/100A At
		Charger 1.7L	1983	Idler Pulley	
		Charger 2.2L	1983	Idler Pulley	
		D & W Pickup 3.7L	1982-1983	Idler Pulley	

# Application Guide



Part/ no.	Maker	Model & Engine	Yr		
		Type	From ~ To		
GSP 98001	Dodge	D & W Pickup 5.2L	1981-1983	Idler Pulley	
		D & W Pickup 5.9L	1982-1983	Idler Pulley	W/O PS,W/100 A Alt
		Omni 1.7L	1981-1983	Idler Pulley	
		Omni 2.2L	1981-1983	Idler Pulley	
		Ramcharger 5.2L	1981-1983	Idler Pulley	
		Rampage 2.2L	1982-1983	Idler Pulley	
		400 2.2L	1982-1983	Idler Pulley	
		600 2.2L	1983	Idler Pulley	
		Diplomat 3.7L	1981-1982	Idler Pulley	
		Diplomat 3.7L(Canada)	1981-1982	Idler Pulley	
		Mirada 3.7L	1981-1982	Idler Pulley	
		O24 1.7L	1981-1982	Idler Pulley	
		O24 2.2L	1981-1982	Idler Pulley	
		B Van 5.9L	1981	Idler Pulley	
		D & W Pickup 5.9L	1981	Idler Pulley	
		Mirada 3.7L(Canada)	1981	Idler Pulley	
		Ramcharger 5.9L	1981	Idler Pulley	
		St. Regis 3.7L	1981	Idler Pulley	
		St. Regis 3.7L(Canada)	1981	Idler Pulley	
	Eagle	Vision 3.3L(Canada)	1997	Idler Pulley-AC Drive	
		Vision 3.3L	1993-1996	Idler Pulley-AC Drive	
		Vision 3.3L Flex	1994	Idler Pulley-AC Drive	
		Summit 2.4L	1993	Idler Pulley-AC Drive	
	Plymouth	Grand Voyager 3.0L	2000	Idler Pulley-Adjustable	
		Voyager 3.0L	2000	Idler Pulley-Adjustable	
		Grand Voyager 3.0L	1996-1999	Idler Pulley-Adjustable	V-Belt
		Voyager 3.0L	1996-1999	Idler Pulley-Adjustable	V-Belt
		Acclaim 2.5L	1990-1995	Idler Pulley-AC Drive	
		Acclaim 3.0L	1989-1995	Idler Pulley-AC Drive	
		Grand Voyager 3.0L	1992-1995	Idler Pulley	W/AC, V-Belt
		Voyager 2.5L	1990-1995	Tensioner Pulley	W/AC
		Voyager 3.0L	1987-1995	Idler Pulley	W/AC, V-Belt
		Acclaim 2.5L Flex	1993-1994	Idler Pulley-AC Drive	
Sundance 2.2L		1990-1994	Idler Pulley-AC Drive		
Sundance 2.5L		1990-1994	Idler Pulley-AC Drive		
Sundance 3.0L		1992-1994	Idler Pulley-AC Drive		
Horizon 2.2L		1990	Idler Pulley-AC Drive		



# GMB Idler Pulley



60

GMB Korea Corporation

Part /no.	Maker	Model & Engine	Yr		
		Type	From ~ To		
GSP 98001	Plymouth	Grand Voyager 3.0L	1988-1989	Idler Pulley	W/AC, V-Belt
		Caravelle 2.2L	1985-1988	Idler Pulley-AC Drive	
		Caravelle 2.2L(Canada)	1987-1988	Idler Pulley-AC Drive	
		Caravelle 2.5L	1986-1988	Idler Pulley-AC Drive	
		Expo 2.2L(Canada)	1987-1988	Idler Pulley-AC Drive	
		Grand Voyager 2.5L	1988	Tensioner Pulley	W/AC
		Horizon 2.2L	1984-1988	Idler Pulley-AC Drive	
		Reliant 2.2L	1984-1988	Idler Pulley-AC Drive	
		Reliant 2.5L	1986-1988	Idler Pulley-AC Drive	
		Sundance 2.2L	1987-1988	Idler Pulley-AC Drive	
		Sundance 2.5L	1988	Idler Pulley-AC Drive	
		Voyager 2.5L	1987-1988	Tensioner Pulley	W/AC
		Turismo 2.2L	1984-1987	Idler Pulley-AC Drive	
		Voyager 2.2L	1987	Tensioner Pulley	W/AC
		Voyager 2.6L	1987	Idler Pulley	W/AC, V-Belt
		Voyager 2.2L	1984-1986	Idler Pulley	W/AC
		Caravelle 2.2L(Canada)	1984	Idler Pulley-AC Drive	
		B Van 3.7L	1982-1983	Idler Pulley	
		B Van 5.2L	1981-1983	Idler Pulley	
		B Van 5.9L	1981-1983	Idler Pulley	
		Caravelle 2.2L(Canada)	1983	Idler Pulley	
		Caravelle Salon 3.7L(Canada)	1983	Idler Pulley	
		Gran Fury 3.7L	1981-1983	Idler Pulley	
		Horizon 1.7L	1981-1983	Idler Pulley	
		Horizon 2.2L	1981-1983	Idler Pulley	
		Reliant 2.2L	1981-1983	Idler Pulley	
		Scamp Pickup 2.2L	1983	Idler Pulley	
		Turismo 1.7L	1983	Idler Pulley	
		Turismo 2.2L	1983	Idler Pulley	
		Caravelle 3.7L(Canada)	1981-1982	Idler Pulley	
		TC3 1.7L	1981-1982	Idler Pulley	
		TC3 2.2L	1981-1982	Idler Pulley	
Gran Fury 3.7L(Canada)	1981	Idler Pulley			
Trailduster 5.2L	1981	Idler Pulley			
Trailduster 5.9L	1981	Idler Pulley			
GSP 98002	Mitsubishi	OE # : 91201-13020		Idler Pulley	
GSP 98003	Buick	Century 2.5L	1986	Idler Pulley	W/AC

# Application Guide



Part/ no.	Maker	Model & Engine	Yr		
		Type	From ~ To		
GSP 98003	Buick	Century Estate Wagon 2.5L	1986	Idler Pulley	W/AC
		Skyhawk 2.0L	1985-1986	Idler Pulley	
	Cadillac	Cimarron 2.0L	1983-1986	Idler Pulley	
		Cimarron 1.8L	1982	Idler Pulley	
	Chevrolet	P Van 5.7L	1991-1996	Idler Pulley	W/AC
		P Van 4.3L	1992-1995	Idler Pulley	W/AC
		P Van 5.7L	1985-1990	Idler Pulley	
		G Van 5.7L	1987-1988	Idler Pulley	VIN M
		Astro 4.3L	1985-1986	Idler Pulley	W/AC
		Cavalier 2.0L	1985-1986	Idler Pulley	
		Celebrity 2.5L	1986	Idler Pulley	W/AC
		G Van 4.3L	1985-1986	Idler Pulley	
		G Van 5.0L	1985-1986	Idler Pulley	
	Dodge	Colt 1.5L	1990-1994	Idler Pulley	
		Colt Vista 2.0L	1990-1991	Idler Pulley	
	Eagle	Summit 1.5L	1989-1996	Tensioner Pulley	
		Summit 1.8L	1992	Tensioner Pulley	
	Ford	Festiva 1.3L	1989-1993	Idler Pulley	W/Dir AC
	GMC	P Van 5.7L	1991-1996	Idler Pulley	W/AC
		P Van 4.3L	1992-1995	Idler Pulley	W/AC
		P Van 5.7L	1985-1990	Idler Pulley	
		G Van 5.7L	1987-1988	Idler Pulley	VIN M
		G Van 4.3L	1985-1986	Idler Pulley	
		G Van 5.0L	1985-1986	Idler Pulley	
		G Van 5.7L	1985-1986	Idler Pulley	
	Safari 4.3L	1985-1986	Idler Pulley	W/AC	
	Honda	Passport 2.6L	1994-1996	Idler Pulley-AC Drive	
	Isuzu	Rodeo 2.6L	1991-1997	Idler Pulley-AC Drive	
		Pickup 2.3L	1986-1995	Idler Pulley-AC Drive	
		Pickup 2.6L	1988-1995	Idler Pulley-AC Drive	
Amigo 2.6L		1989-1994	Idler Pulley-AC Drive		
Amigo 2.3L		1989-1993	Idler Pulley-AC Drive		
Rodeo 3.2L		1993	Idler Pulley-PS Drive		
Trooper 2.6L		1990-1991	Idler Pulley-AC Drive		
Trooper II 2.6L		1988-1989	Idler Pulley-AC Drive		
Trooper II 2.3L	1986-1987	Idler Pulley-AC Drive			

# GMB Idler Pulley



62

GMB Korea Corporation

Part / no.	Maker	Model & Engine	Yr		
		Type	From ~ To		
GSP 98003	Mazda	B2600I Pickup 2.6L	1992-1993	Idler Pulley	
		MPV 2.6L	1991-1992	Idler Pulley	
		MPV 3.0L	1991-1992	Idler Pulley	
	Mitsubishi	Mirage 1.5L	1990-1996	Tensioner Pulley	
		Pickup 2.6L	1985-1986	Idler Pulley	
	Nissan	Frontier 2.4L	1998-2003	Idler Pulley-PS Drive	
		Xterra 2.4L	2000-2003	Idler Pulley-PS Drive	
		Pickup 2.4L	1986-1989	Idler Pulley-PS Drive	
		Pathfinder 2.4L	1987	Idler Pulley-PS Drive	
	Oldsmobile	Cutlass Ciera 2.5L	1986	Idler Pulley	W/AC
		Cutlass Cruiser 2.5L	1986	Idler Pulley	
		Firenza 2.0L	1985-1986	Idler Pulley	
	Pontiac	Sunbird 2.0L	1985-1986	Idler Pulley	
		6000 2.5L	1986	Idler Pulley	W/AC
GSP 98004	American Motors	Eagle 4.2L	1980-1988	Idler Pulley	
		Eagle 2.5L	1981-1984	Idler Pulley	
		Concord 4.2L	1980-1983	Idler Pulley	
		Spirit 4.2L	1980-1983	Idler Pulley	
		Concord 2.5L	1980-1982	Idler Pulley	
		Spirit 2.5L	1980-1982	Idler Pulley	
		Pacer 4.2L	1980	Idler Pulley	
		Concord 121 CID	1978-1979	Idler Pulley	
		Concord 232 CID	1978-1979	Idler Pulley	
		Concord 258 CID	1978-1979	Idler Pulley	
		Concord 304 CID	1978-1979	Idler Pulley	
		Pacer 258 CID	1975-1979	Idler Pulley	
		Spirit 232 CID	1979	Idler Pulley	
		Matador 258 CID	1975-1978	Idler Pulley	
		Matador 360 CID	1973-1978	Idler Pulley	
		Pacer 232 CID	1975-1978	Idler Pulley	
		Homet 232 CID	1970-1977	Idler Pulley	
		Homet 258 CID	1971-1977	Idler Pulley	
		Homet 304 CID	1970-1977	Idler Pulley	
		Matador 304 CID	1973-1977	Idler Pulley	
		Gremlin 304 CID	1972-1974	Idler Pulley	
		Chrysler	New Yorker 5.2L	1980	Idler Pulley
New Yorker 5.9L	1980		Idler Pulley		

# Application Guide



Part/ no.	Maker	Model & Engine	Yr		
		Type	From ~ To		
GSP 98004	Chrysler	Newport 3.7L	1980	Idler Pulley	
		Cordoba 318 CID	1975-1979	Idler Pulley	
		Cordoba 360 CID	1975-1979	Idler Pulley	
		New Yorker 360 CID	1977-1979	Idler Pulley	
		Newport 225 CID	1979	Idler Pulley	
		Cordoba 400 CID	1975-1978	Idler Pulley	
		Lebaron 318 CID	1977-1978	Idler Pulley	
		Lebaron 360 CID	1978	Idler Pulley	
		New Yorker 400 CID	1975-1978	Idler Pulley	
		New Yorker 440 CID	1976-1978	Idler Pulley	
	Dodge	Ram 50 Pickup 2.0L	1984-1986	Idler Pulley	
		Ram 50 Pickup 2.6L	1981-1986	Idler Pulley	
		Ram 50 Pickup 2.3L Diesel	1983-1985	Idler Pulley	
		Colt 1.6L	1980-1984	Idler Pulley	
		Colt Vista 2.0L	1984	Idler Pulley	
		Challenger 2.6L	1980-1983	Idler Pulley	
		Ram 50 Pickup 2.0L	1981-1982	Idler Pulley	
		Colt 2.6L	1980	Idler Pulley	
		D50 Pickup 2.0L	1980	Idler Pulley	
		D50 Pickup 2.6L	1980	Idler Pulley	
		Challenger 156 CID	1979	Idler Pulley	
		Diplomat 225 CID	1978-1979	Idler Pulley	
		Aspen 225 CID	1976-1977	Idler Pulley	
		Aspen 318 CID	1976-1977	Idler Pulley	
		Aspen 360 CID	1976-1977	Idler Pulley	
	Ford	E Van 5.0L	1996	Idler Pulley	W/Dir AC
		Bronco 5.8L	1995	Idler Pulley	W/Dir AC
		E Van 5.0L	1990-1994	Idler Pulley	W/Dir AC
		E Van 5.8L	1990-1994	Idler Pulley	W/Dir AC
		F Pickup 5.0L	1990-1994	Idler Pulley	W/Dir AC
		F Pickup 5.8L	1990-1994	Idler Pulley	W/Dir AC
		E Van 7.5L	1990-1993	Idler Pulley	W/Dir AC
		Bronco 5.0L	1991-1992	Idler Pulley	W/Dir AC
Bronco 5.8L		1991-1992	Idler Pulley	W/Dir AC	
E Van 7.3L Diesel		1990-1992	Idler Pulley		
F Pickup 7.3L Diesel		1990-1992	Idler Pulley		
Super Duty Pickup 7.3L Diesel		1990-1992	Idler Pulley		

# GMB Idler Pulley



64

GMB Korea corporation

Part /no.	Maker	Model & Engine	Yr		
		Type	From ~ To		
GSP 98004	Ford	Bronco Full Size 5.0L	1990	Idler Pulley	W/Dir AC
		Bronco Full Size 5.8L	1990	Idler Pulley	W/Dir AC
		E Van 7.3L Diesel	1988-1989	Idler Pulley	W/Dir AC
		F Pickup 7.3L Diesel	1988-1989	Idler Pulley	W/Dir AC
		Mustang 5.0L	1984-1989	Idler Pulley	W/Dir AC
		Super Duty Pickup 7.3L Diesel	1988-1989	Idler Pulley	W/Dir AC
		Thunderbird 2.3L	1988	Idler Pulley	W/Dir AC
		Thunderbird 3.8L	1983-1988	Idler Pulley	W/Dir AC
		Mustang 2.3L	1980-1987	Idler Pulley	W/Dir AC
		Ranger 2.9L	1987	Idler Pulley	W/Dir AC
		Bronco Full Size 5.8L	1984-1986	Idler Pulley	W/Dir AC
		E Van 4.9L	1983-1986	Idler Pulley	W/Dir AC
		E Van 5.0L	1980-1986	Idler Pulley	W/Dir AC
		E Van 5.8L	1982-1986	Idler Pulley	W/Dir AC
		E Van 7.5L	1985-1986	Idler Pulley	W/Dir AC
		F Pickup 5.0L	1980-1986	Idler Pulley	W/Dir AC
		F Pickup 5.8L	1980-1986	Idler Pulley	W/Dir AC
		F Pickup 7.5L	1985-1986	Idler Pulley	W/Dir AC
		Mustang 3.8L	1983-1986	Idler Pulley	W/Dir AC
		Thunderbird 2.3L	1983-1986	Idler Pulley	W/Dir AC
		Bronco Compact 2.8L	1985	Idler Pulley	W/Dir AC
		Ranger 2.8L	1985	Idler Pulley	W/Dir AC
		Bronco Full Size 5.0L	1984	Idler Pulley	W/Dir AC
		Thunderbird 5.0L	1983-1984	Idler Pulley	W/Dir AC
		Bronco 5.0L	1980-1983	Idler Pulley	W/Dir AC
		E Van 6.6L	1980-1982	Idler Pulley	W/Dir AC
		F Pickup 6.6L	1980-1982	Idler Pulley	W/Dir AC
		Ltd 5.0L	1980-1982	Idler Pulley	W/Dir AC
		Ltd Crown Victoria 5.0L	1982	Idler Pulley	W/Dir AC
		Granada 2.3L	1981	Idler Pulley	W/Dir AC
		Thunderbird 5.0L	1980-1981	Idler Pulley	W/Dir AC
		Fiesta 1.6L	1980	Idler Pulley	W/Dir AC
		Pinto 2.3L	1980	Idler Pulley	W/Dir AC
E Van 302 CID	1979	Idler Pulley	W/Dir AC		
E Van 351 CID	1975-1979	Idler Pulley	W/Dir AC		
E Van 460 CID	1977-1979	Idler Pulley	W/Dir AC		
F Pickup 302 CID	1970-1979	Idler Pulley	W/Dir AC		

# Application Guide



Part/ no.	Maker	Model & Engine	Yr	Type	W/Dir AC	
		Type	From ~ To			
GSP 98004	Ford	F Pickup 351 CID	1977-1979	Idler Pulley	W/Dir AC	
		F Pickup 400 CID	1977-1979	Idler Pulley	W/Dir AC	
		F Pickup 460 CID	1977-1979	Idler Pulley	W/Dir AC	
		Fairmont 302 CID	1978-1979	Idler Pulley	W/Dir AC	
		Fiesta 98 CID	1978-1979	Idler Pulley	W/Dir AC	
		Mustang 140 CID	1979	Idler Pulley	W/Dir AC	
		Mustang 200 CID	1979	Idler Pulley	W/Dir AC	
		Mustang 171 CID	1979	Idler Pulley	W/Dir AC	
		Mustang 302 CID	1979	Idler Pulley	W/Dir AC	
		Thunderbird 302 CID	1977-1979	Idler Pulley	W/Dir AC	
		Mustang II 140 CID	1974-1978	Idler Pulley	W/Dir AC	
		Mustang II 171 CID	1974-1978	Idler Pulley	W/Dir AC	
		Mustang II 302 CID	1975-1977	Idler Pulley	W/Dir AC	
		E Van 302 CID	1970-1974	Idler Pulley	W/Dir AC	
	Jeep	Grand Wagoneer 5.9L	1987-1990	Idler Pulley		
		J Pickup 5.9L	1987-1988	Idler Pulley		
		Cherokee 2.1L Diesel	1985-1987	Idler Pulley		
		Comanche 2.1L Diesel	1986-1987	Idler Pulley		
		J Pickup 4.2L	1987	Idler Pulley		
		Wagoneer 2.1L Diesel	1985-1987	Idler Pulley		
	Mercury	Cougar 3.8L	1982-1988	Idler Pulley	W/Dir AC	
		Capri 2.3L	1980-1986	Idler Pulley	W/Dir AC	
		Capri 3.8L	1983-1986	Idler Pulley	W/Dir AC	
		Capri 5.0L	1982-1986	Idler Pulley	W/Dir AC	
		Cougar 2.3L	1984-1986	Idler Pulley	W/Dir AC	
		Marquis 2.3L	1985-1986	Idler Pulley	W/Dir AC	
		Marquis 3.8L	1983-1986	Idler Pulley	W/Dir AC	
		Marquis 5.0L(Canada)	1985	Idler Pulley	W/Dir AC	
		Cougar 5.0L	1983-1984	Idler Pulley	W/Dir AC	
		Grand Marquis 5.0L	1980-1984	Idler Pulley	W/Dir AC	
		Marquis 2.3L	1983	Idler Pulley	W/Dir AC	
		Marquis 3.3L	1983	Idler Pulley	W/Dir AC	
		Capri 3.3L	1980-1982	Idler Pulley	W/Dir AC	
Capri 4.2L		1980-1982	Idler Pulley	W/Dir AC		
Cougar 3.3L		1982	Idler Pulley	W/Dir AC		
Cougar XR7 3.3L		1981-1982	Idler Pulley	W/Dir AC		
Cougar XR7 3.8L	1982	Idler Pulley	W/Dir AC			

# GMB Idler Pulley



66

GMB Korea corporation

Part /no.	Maker	Model & Engine	Yr	Type		
		Type	From ~ To			
GSP 98004	Mercury	Cougar XR7 4.2L	1982	Idler Pulley	W/Dir AC	
		Marquis 5.0L	1981-1982	Idler Pulley	W/Dir AC	
		Marquis 5.8L(Canada)	1982	Idler Pulley	W/Dir AC	
		Grand Marquis 5.8L	1980-1981	Idler Pulley	W/Dir AC	
		Marquis 5.8L	1980-1981	Idler Pulley	W/Dir AC	
		Cougar 3.3L	1980	Idler Pulley	W/Dir AC	
		Cougar 4.2L	1980	Idler Pulley	W/Dir AC	
		Monarch 4.2L	1980	Idler Pulley	W/Dir AC	
		Capri 140 CID	1979	Idler Pulley	W/Dir AC	
		Capri 200 CID	1979	Idler Pulley	W/Dir AC	
		Capri 171 CID	1979	Idler Pulley	W/Dir AC	
		Capri 302 CID	1979	Idler Pulley	W/Dir AC	
		Cougar 302 CID	1977-1979	Idler Pulley	W/Dir AC	
		Cougar 351 CID	1973-1979	Idler Pulley	W/Dir AC	
		Marquis 302 CID	1979	Idler Pulley	W/Dir AC	
		Marquis 351 CID	1978-1979	Idler Pulley	W/Dir AC	
		Zephyr 302 CID	1978-1979	Idler Pulley	W/Dir AC	
		Cougar 400 CID	1974-1978	Idler Pulley	W/Dir AC	
		Marquis 400 CID	1973-1978	Idler Pulley	W/Dir AC	
		Marquis 460 CID	1974-1978	Idler Pulley	W/Dir AC	
	Monarch 351 CID	1977	Idler Pulley	W/Dir AC		
	Montego 351 CID	1970-1976	Idler Pulley	W/Dir AC		
	Montego 400 CID	1972-1976	Idler Pulley	W/Dir AC		
	Monarch 351 CID	1975	Idler Pulley	W/Dir AC		
	Montego 302 CID	1970-1974	Idler Pulley	W/Dir AC		
	Montego 429 CID	1970-1973	Idler Pulley	W/Dir AC		
	Plymouth	Colt 1.4L	1983-1984	Idler Pulley		
		Colt 1.6L	1983-1984	Idler Pulley		
		Colt Vista 2.0L	1984	Idler Pulley		
		Conquest 2.6L	1984	Idler Pulley		
Sapporo 2.6L		1980-1983	Idler Pulley			
Champ 1.4L		1980-1982	Idler Pulley			
Champ 1.6L		1980-1982	Idler Pulley			
Arrow 1.6L		1980	Idler Pulley			
Arrow 2.6L		1980	Idler Pulley			
Volare 3.7L		1980	Idler Pulley			
Volare 225 CID	1978-1979	Idler Pulley				



# Application Guide



Part/ no.	Maker	Model & Engine	Yr		
		Type	From ~ To		
GSP 98004	Plymouth	Volare 318 CID	1978-1979	Idler Pulley	
		Volare 360 CID	1978-1979	Idler Pulley	
		Fury 318 CID	1975-1978	Idler Pulley	
		Fury 360 CID	1974-1978	Idler Pulley	
		Gran Fury 318 CID	1975-1977	Idler Pulley	
		Gran Fury 360 CID	1975-1977	Idler Pulley	
		Valiant 225 CID	1974-1976	Idler Pulley	
		Valiant 318 CID	1974-1976	Idler Pulley	
		Valiant 360 CID	1976	Idler Pulley	
		Valiant 360 CID	1974	Idler Pulley	
GSP 98005	Chrysler	300M 3.5L	1999-2003	Idler Pulley-AC Drive	
		Concorde 3.5L	2002	Idler Pulley-AC Drive	
		Intrepid 3.5L(Canada)	2000-2002	Idler Pulley-AC Drive	
		Prowler 3.5L	2001-2002	Idler Pulley-AC Drive	
		Concorde 3.2L	1998-2001	Idler Pulley-AC Drive	
		Intrepid 3.2L(Canada)	1998-2001	Idler Pulley-AC Drive	
		LHS 3.5L	1999-2001	Idler Pulley-AC Drive	
		Concorde 3.5L	1993-1997	Idler Pulley-AC Drive	
		Intrepid 3.5L(Canada)	1993-1997	Idler Pulley-AC Drive	
		LHS 3.5L	1994-1997	Idler Pulley-AC Drive	
	New Yorker 3.5L	1994-1996	Idler Pulley-AC Drive		
	Dodge	Intrepid 3.5L	2000-2002	Idler Pulley-AC Drive	
		Intrepid 3.2L	1998-2001	Idler Pulley-AC Drive	
		Intrepid 3.5L	1993-1997	Idler Pulley-AC Drive	
	Eagle	Vision 3.5L	1993-1997	Idler Pulley-AC Drive	W/V-Belt Drive
	Plymouth	Prowler 3.5L	2000-2001	Idler Pulley-AC Drive	
Prowler 3.5L		1997	Idler Pulley-AC Drive		
GSP 98006	Hyundai	Elantra : 23129-24310	1989~1993	Idler Pulley	
		Grandeur : 23129-33370	1992	Idler Pulley	
	Kia	Sportage : OK011-15-930A		Idler Pulley	
		Pregio : OK72A-15-930		Idler Pulley	
GSP 98007	Hyundai	Elantra : 23129-24500		Idler Pulley	
		Sonata : 23129-33001	1998	Idler Pulley	
		Starex : 23129-4A000		Idler Pulley	
		Starex : 23129-4A050		Idler Pulley	
		Starex : 23129-4A051		Idler Pulley	
		Porter : 23129-4A051	1996	Idler Pulley	







---

MEMO

A series of horizontal dotted lines for writing, filling the majority of the page below the 'MEMO' header.



# GMB

---

## MEMO

A series of horizontal dotted lines for writing.





---

MEMO

A series of horizontal dotted lines for writing, filling the majority of the page below the 'MEMO' header.



# GMB

---

## MEMO

A series of horizontal dotted lines for writing.







---

MEMO

A series of horizontal dotted lines for writing, filling the majority of the page below the 'MEMO' header and above the bottom bar.

